

嵌入式工业主板 产品型录



诺达佳 · 中国

苏州市吴中区临湖镇银藏路480号

邮箱地址: hlm@nodka.com

联系电话: 胡先生 (18915742203)

田女士 (15250208280)

诺达佳 · 欧洲

Luchthavenweg 81.038 , 5657 EA Eindhoven , The Netherlands

Email: wuyong@nodka.com

Mobile: +31(0) 6 2029 2256



扫码关注
诺达佳官方微信公众号

激进的COMLAC模块化电脑专家

 **NODKA** 诺达佳



成为全球领先的IPC&HMI系统平台制造商

Becoming the Global Leading IPC&HMI System Platform Manufacturer

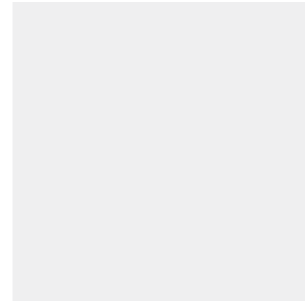
诺达佳 (NODKA) 创立于2001年, 致力于工业PC和HMI系统平台的研发创新, 为自动化、量测、通讯等领域的客户提供全面的产品解决方案, 产品线涵盖X86/ARM主板计算机模块、嵌入式计算机、工业平板电脑、工业显示器、工业操作面板、AutomationPC、EtherCAT从站I/O、网络安全硬件平台等, 广泛应用于工业自动化、交通、电力、石化、钢铁、新能源、环保、医疗及商业自助终端等行业。

历经多年的产业投入和经验积累, 公司设有X86/ARM主板研发中心、系统整机研发中心及自动化I/O软硬件研发, 配套有高低温、湿度、振动、跌落、EMC、ESD、EFT、雷击浪涌等完善的DQA测试实验室, 可保障工业产品设计的可靠性; 公司拥有5万多平米的工厂, 建立系统整机组装、SMT/DIP、精密钣金、CNC加工、烤漆和阳极氧化表面处理等全流程的智能制造中心, 工厂制程与管控皆符合ISO9001、ISO14001认证规范, 满足为客户提供高质量, 少量多样和大批量生产制造, 兼具OEM/ODM客制化服务能力。

诺达佳通过不懈的努力, 已成功晋升为最受欢迎的工业计算机解决方案提供商之一, 并与全球超过30个国家的5000个以上快速增长的客户合作, 未来我们仍将通过持续的创新和优秀的团队合作, 成为您值得信赖的自动化合作伙伴。

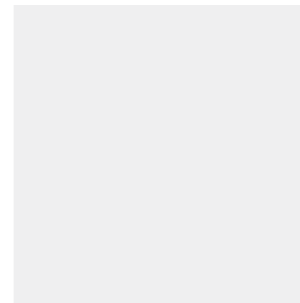
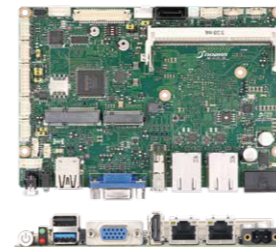
目录 CONTENTS

01 COMLAC计算机模块



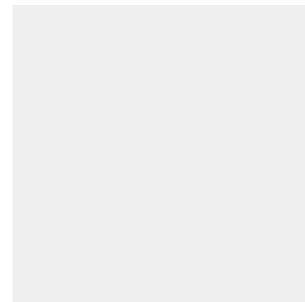
- NK-L312-J1900
- NK-L313-J3455
- NK-L314-5200U/5500U
- NK-L315-3855U/6200U/7200U/7600U
- NK-L316-4205U/8145U/8265U
- NK-L317-J6412
- NK-L510-H110
- NK-L520-H510
- NK-L530-H610
- NK-L601-D2000

02 嵌入式工业主板

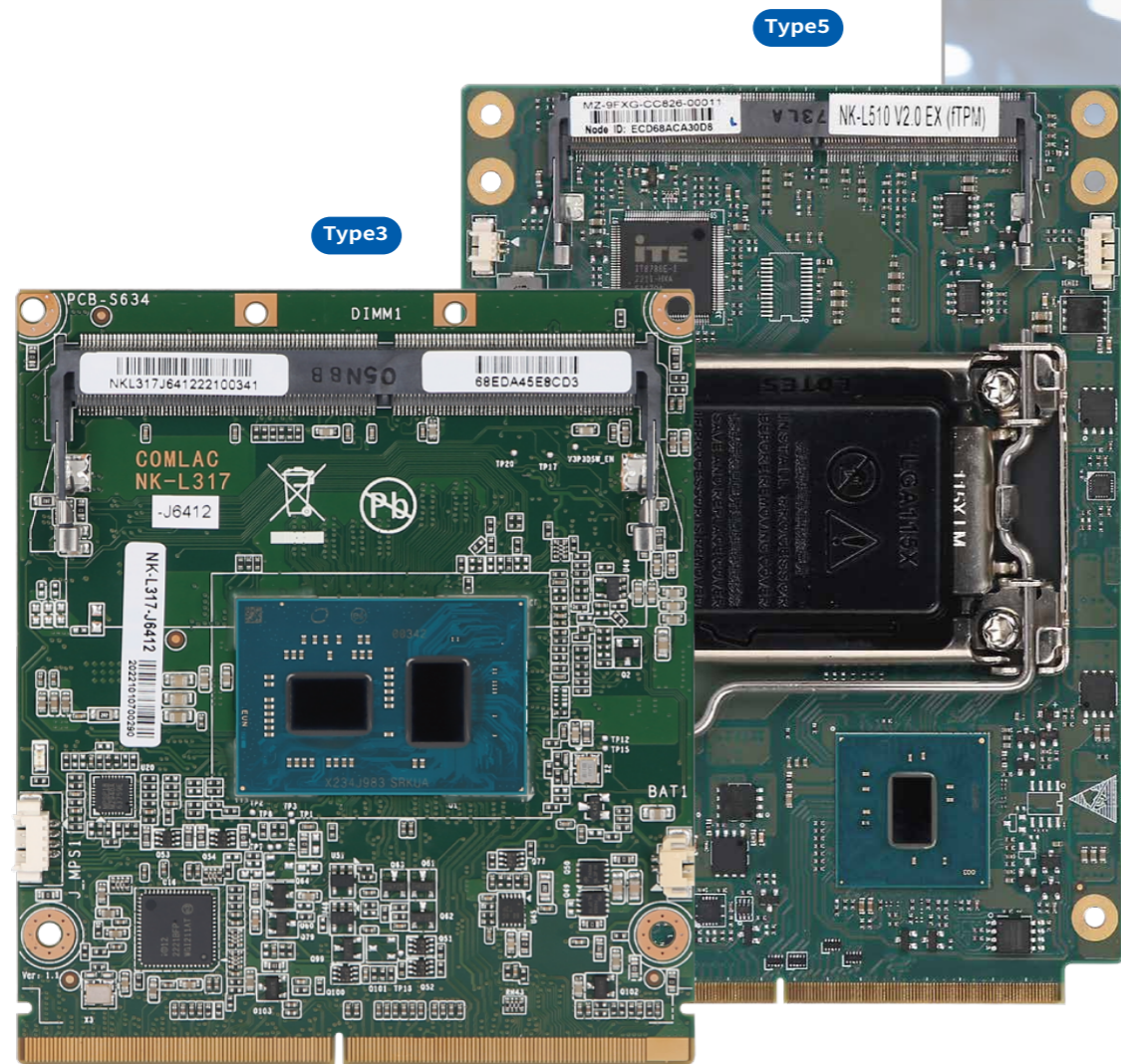


- NK-6120
- NK-6121
- NK-6170
- NK-6171
- NK-6172
- NK-6180
- NK-6181

03 ATX/Micro-ATX工业母板



- NK-7106
- NK-7107
- NK-7205
- NK-7208
- NK-7305
- NK-7306
- NK-5105



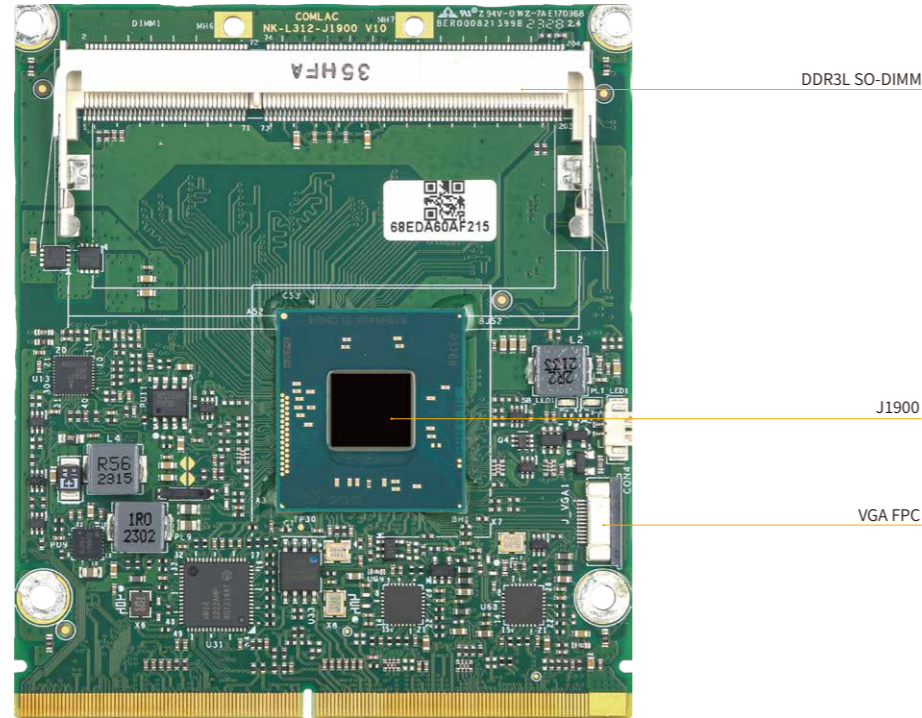
COMLAC 计算机模块

COMLAC是一种小尺寸计算机模块,集成了通用X86 PC的所有核心组件,透过314针MXM3.0高速连接器提供所有 I/O 信号(图形、声音、存储、PCIe、网络、串口、USB 等),安装在特定载板上;COMLAC计算机模块能实现功耗 5W至65W之间的X86 CPU解决方案,同时满足高性能或低功耗的CPU平台,适用于如军工、电力、交通、机床、机器人、运动视觉控制器以及医疗设备。

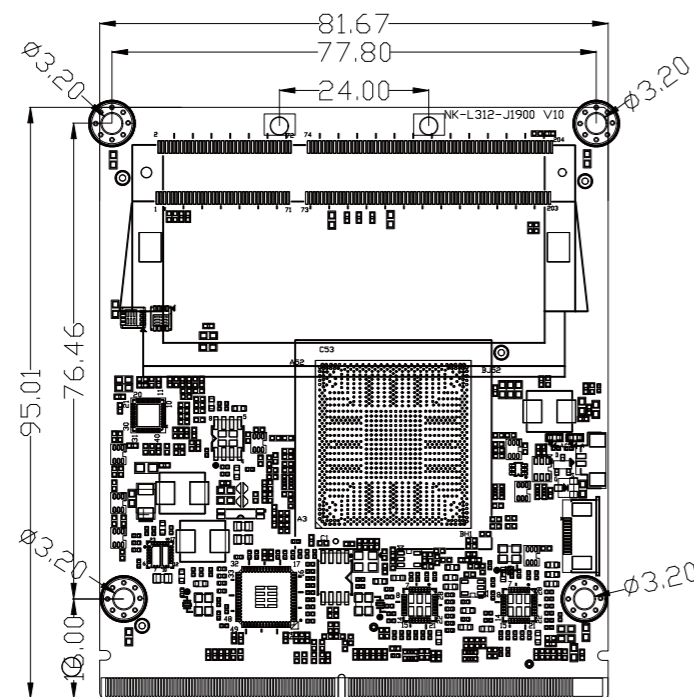
根据性能和空间要求,计算机模块具有不同的规格尺寸分为COMLAC Type3和COMLAC Type5。

NK-L312-J1900

内部接口 Internal I/O



产品尺寸图(Unit:mm)



产品特点Feature

- Intel® Celeron® J1900 processor, Quad-core, base frequency 2.0GHz, TDP 10W
- Support 1 x DDR3L-1333MHz SO-DIMM slot, up to 8GB
- Support 1 x VGA FPC Connector, 2 x DDI Independent dual display
- Type3 Interface Signals with MXM3.0 Gold Finger

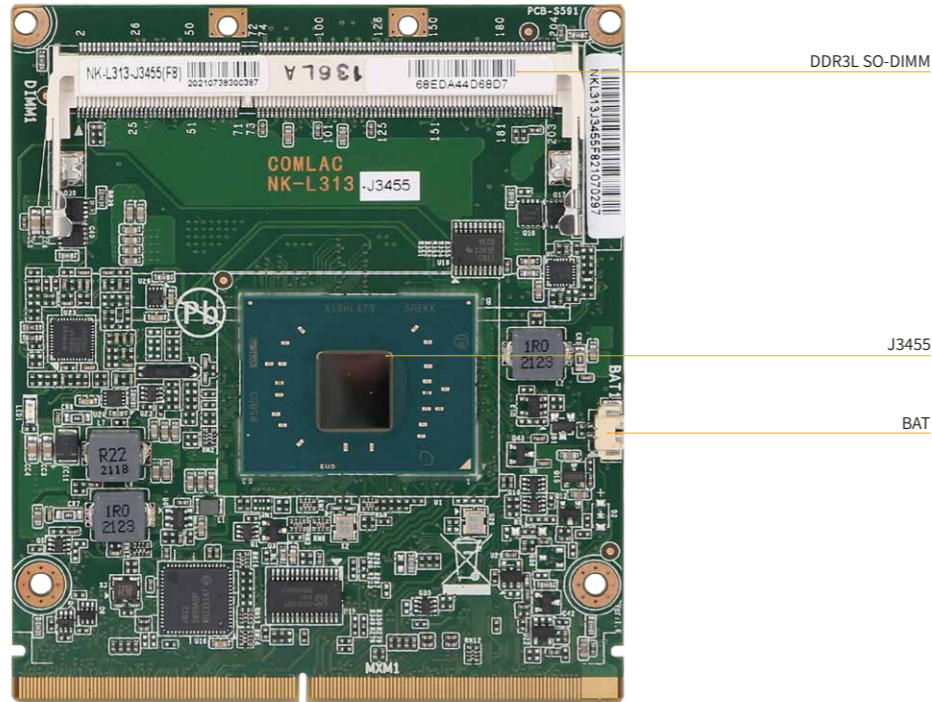
规格 Specification

产品型号		NK-L312-J1900	
处理器 Processor System	CPU	Intel® Celeron® J1900 processor 2.0GHz,TDP 10W	
	芯片组 Chipset	Intel® SoC integrated	
	BIOS	AMI 64Mb UEFI BIOS	
内存 Memory	技术 Technology	Single Channel(Non-ECC) DDR3L-1333MHz, up to 8GB	
	插槽 Slot	1 x DDR3L 240-pin SO-DIMM slot	
图形 Graphic	控制器 Controller	Intel HD graphics integrated	
扩展接口 Expansion Signals	显示 Display	2 x DDI, 1 x VGA FPC Connector	
	串口 Serial Port	2 x Uart(9line), 4 x Uart(3line)	
	USB	1 x USB 3.0, 8 x USB2.0 ^[1]	
	SATA	2 x SATA 2.0	
	PCIe	3 port 3 lanes (3 x 1)	
	GPIO	1 x 4bit GPIO	
	音频 Audio	1 x Intel HDA Audio codec	
	Fan	1 x Smart Fan	
	网络 Ethernet	Intel i210AT controller	
	其他 others	1 x I ² C, 1 x SMBus, 1 x LPC, 1 x Buzzer, 1 x KB/MS	
	看门狗定时器 Watchdog Timer	输出&间隔 Output&Interval	System reset, programmable from 1~255 seconds
	电源 Power	Power input	5V
	操作系统 OS Support	MS Windows	Windows 7/8/10
		Linux	Linux
机械参数 Mechanism	尺寸 Dimensions	(L)95mm x (W)82mm	
	净重 Gross Weight	0.6kg	
	环境 Environment	温度 Temperature	Operating: 0°C~60°C with SSD Storage: -40°C~85°C
	湿度 Humidity	5~95% (Non-condensing)	
	振动 Vibration	5~500Hz, 3Grms operating	

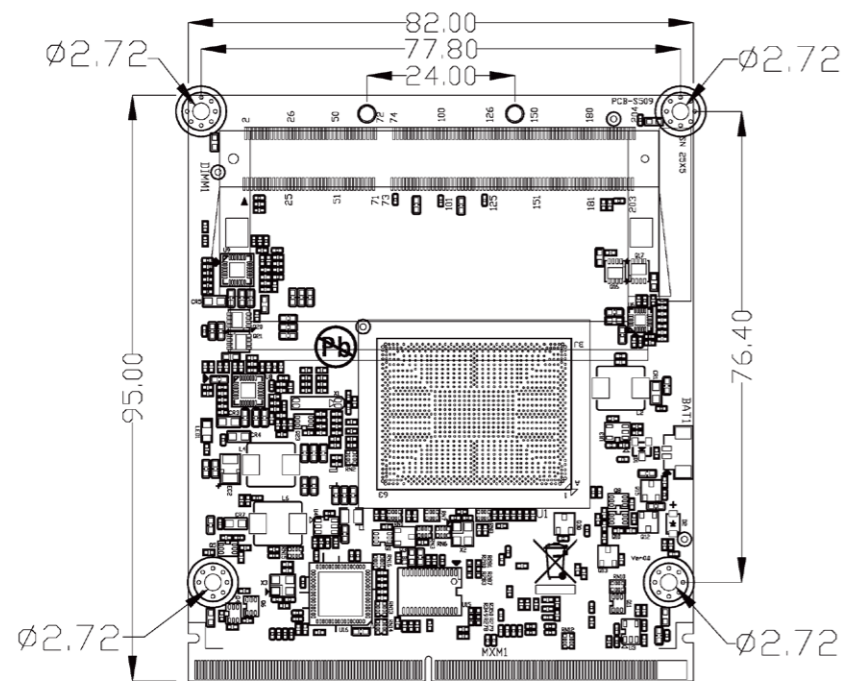
[1] 8/10*USB2.0 selected by resistor, 8*USB2.0 default.

NK-L313-J3455

内部接口 Internal I/O



产品尺寸图(Unit:mm)



产品特点Feature

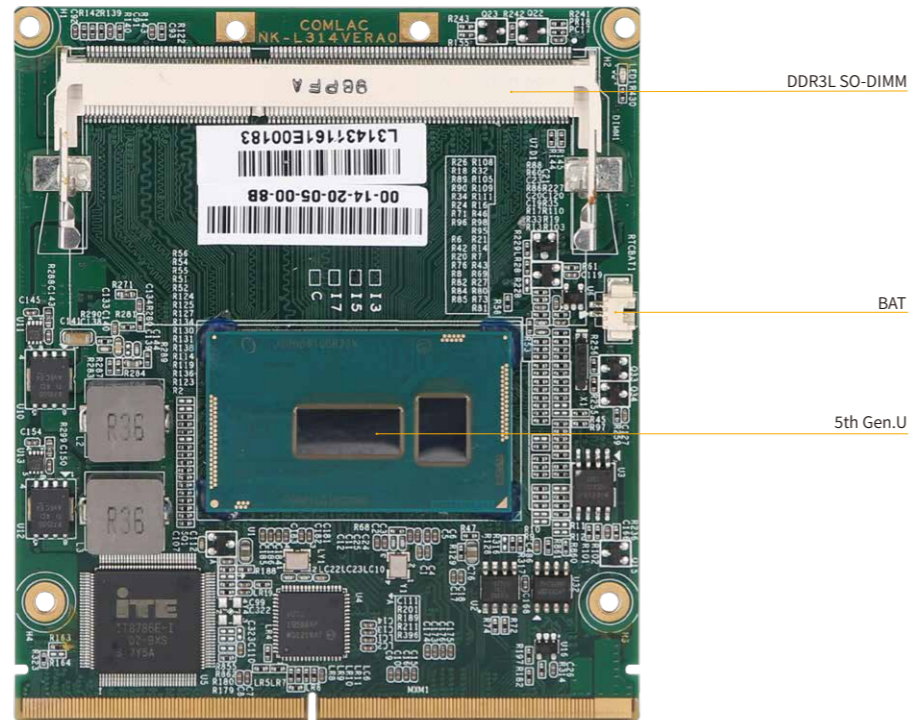
- Intel® Celeron® J3455 processor, Quad-core, base frequency 1.5GHz up to 2.3GHz, TDP 10W
- Support 1x DDR3L-1866MHz SO-DIMM slot, up to 8GB
- Support 2 x DDI, 1 x eDP, Dual-display
- Type3 Interface Signals with MXM3.0 Gold Finger

规格 Specification

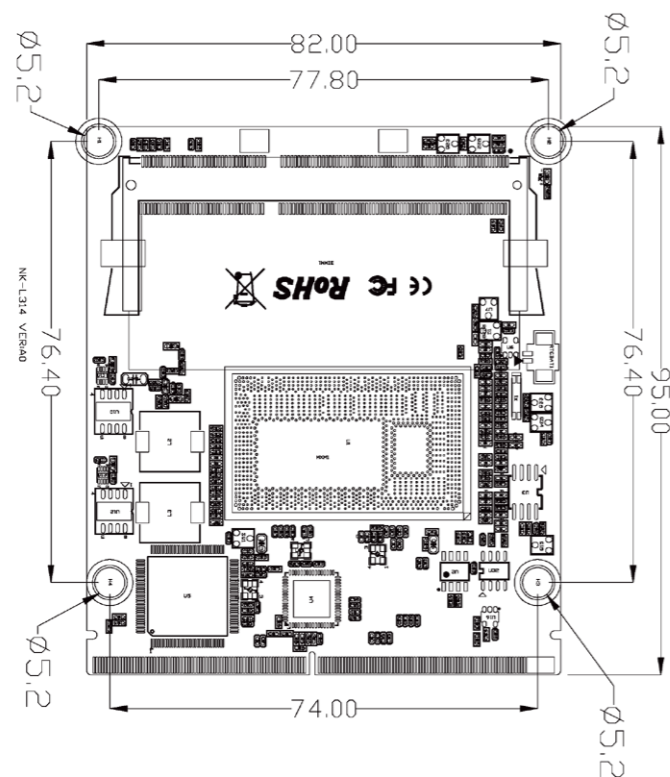
产品型号		NK-L313-J3455	
处理器 Processor System	CPU	Intel® Celeron® J3455 processor 1.5GHz up to 2.3GHz, TDP 10W	
	芯片组 Chipset	Intel® SoC integrated	
	BIOS	AMI 128Mb UEFI BIOS	
内存 Memory	技术 Technology	Single Channel(Non-ECC) DDR3L-1866MHz, up to 8GB	
	插槽 Slot	1 x DDR3L 240-pin SO-DIMM slot	
图形 Graphic	控制器 Controller	Intel HD graphics integrated	
扩展信口 Expansion Signals	显示 Display	2 x DDI, 1 x eDP	
	串口 Serial Port	2 x Uart(9line), 4 x Uart(3line)	
	USB	2 x USB 3.0, 8 x USB 2.0	
	SATA	2 x SATA 3.0	
	PCIe	5 port 5 lanes (1 x 2, 3 x 1)	
	GPIO	1 x 4bit GPIO	
	音频 Audio	1 x Intel HDA Audio codec	
	Fan	1 x Smart Fan	
	网络 Ethernet	Intel i210AT controller	
	其他 others	1 x I ² C, 1 x SMBus, 1 x LPC, 1 x Buzzer, 1 x KB/MS	
	看门狗定时器 Watchdog Timer	输出&间隔 Output&Interval	System reset, programmable from 1~255 seconds
	电源 Power	Power input	5V
操作系统 OS Support	MS Windows	Windows 7/10	
	Linux	Linux	
机械参数 Mechanism	尺寸 Dimensions	(L)95mm x (W)82mm	
	净重 Gross Weight	0.6kg	
	温度 Temperature	Operating: 0°C~60°C with SSD Storage: -40°C~85°C	
环境 Environment	湿度 Humidity	5~95% (Non-condensing)	
	振动 Vibration	5~500Hz, 3Grms operating	

NK-L314-5005U/5300U/5500U

内部接口 Internal I/O



产品尺寸图(Unit:mm)



产品特点Feature

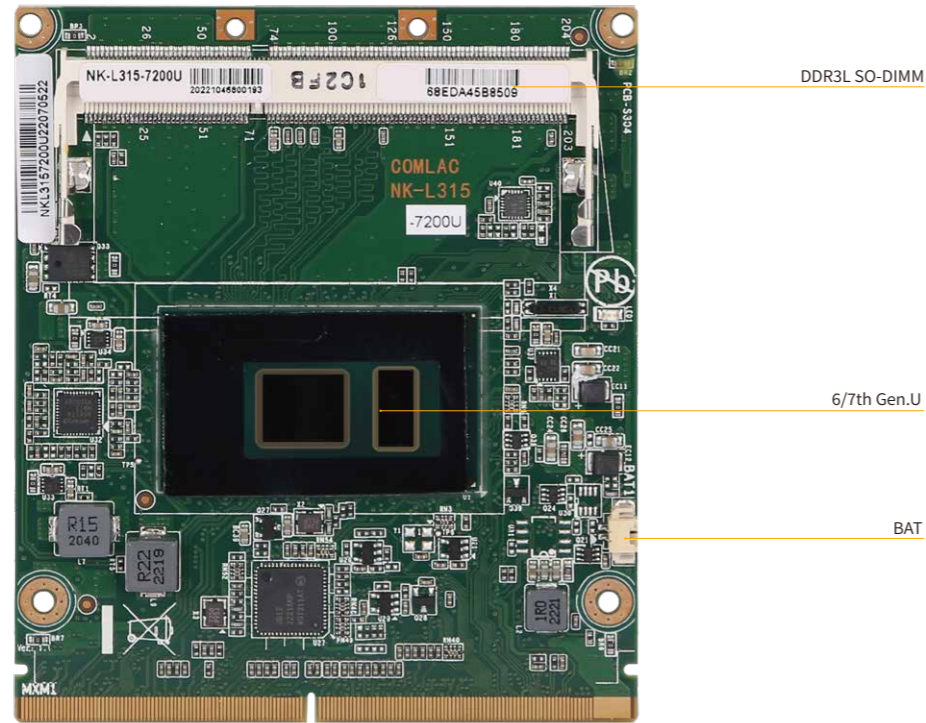
- Intel® 5th Gen. U Dual Core Processors i3-5005U ,base Frequency 2.0GHz up to 2.9GHz),TDP 15W
- Intel® 5th Gen. U Dual Core Processors i5-5300U ,base Frequency 2.3GHz up to 2.9GHz),TDP 15W
- Intel® 5th Gen. U Quad Core Processors i7-5500U ,base Frequency 2.4GHz up to 3.0GHz),TDP 15W
- Support 1 x DDR3L-1333/1600MHz SO-DIMM slot, up to 8GB
- Support 1 x eDP,2 x DDI Tri-display
- Type3 Interface Signals with MXM3.0 Gold Finger

规格 Specification

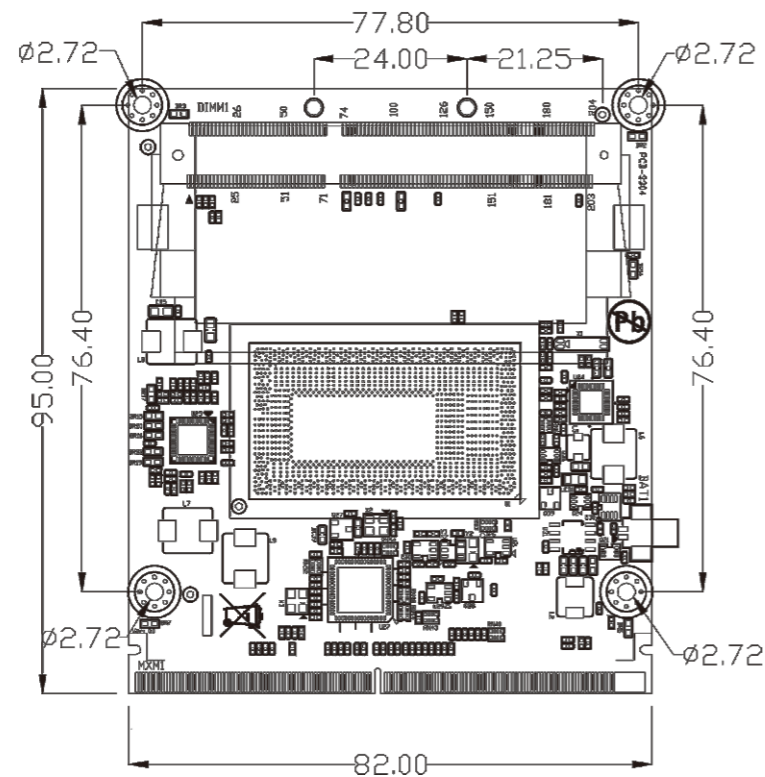
产品型号	NK-L314-5005U/5300U/5500U		
处理器 Processor System	CPU	Intel® 5th Gen. U Core Processors, TDP 15W	
	芯片组 Chipset	Intel® SoC integrated	
	BIOS	AMI 128Mb UEFI BIOS	
内存 Memory	技术 Technology	Single Channel(Non-ECC) DDR3L-1333/1600MHz, up to 8GB	
	插槽 Slot	1 x DDR3L 240-pin SO-DIMM slot	
图形 Graphic	控制器 Controller	Intel HD graphics integrated	
扩展信口 Expansion Signals	显示 Display	2 x DDI,1 x eDP	
	串口 Serial Port	2 x Uart(9line),4 x Uart(3line)	
	USB	2 x USB3.0,8 x USB2.0	
	SATA	2 x SATA 3.0	
	PCIe	5 port 8lanes(1 x 4,4 x 1)	
	GPIO	1 x 4bit GPIO	
	音频 Audio	1 x Intel HDA Audio codec	
	Fan	1 x Smart Fan	
	网络 Ethernet	Intel i210AT controller	
	其他 others	1 x I ² C,1 x SMBus,1 x LPC,1 x Buzzer, 1 x KB/MS	
	看门狗定时器 Watchdog Timer	输出&间隔 Output&Interval	System reset, programmable from 1~255 seconds
	电源 Power	Power input	5V
操作系统 OS Support	MS Windows	Windows 7/10	
	Linux	Linux	
机械参数 Mechanism	尺寸 Dimensions	(L)95mm x (W)82mm	
	净重 Gross Weight	0.8kg	
环境 Environment	温度 Temperature	Operating:0°C~60°C with SSD Storage:-40°C~85°C	
	湿度 Humidity	5~95% (Non-condensing)	
	振动 Vibration	5~500Hz, 3Grms operating	

NK-L315-3855U/6200U/7600U

内部接口 Internal I/O



产品尺寸图(Unit:mm)



产品特点Feature

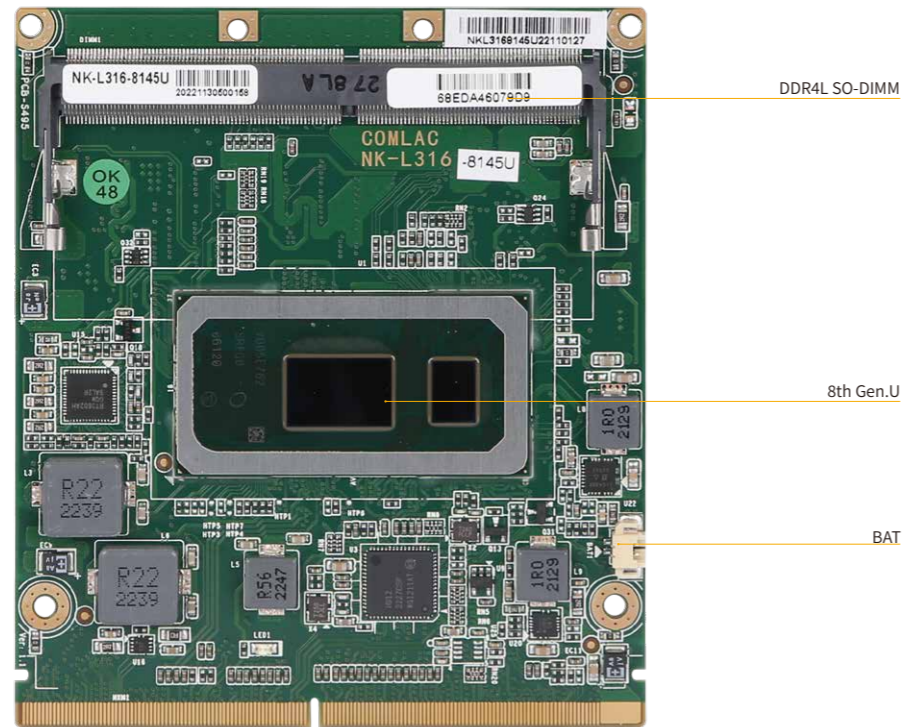
- Intel® Celeron® 3855U processor, Dual-core, base frequency 1.6GHz , TDP 15W
- Intel® Celeron® i5-6200U processor, Dual-core, base frequency 2.3GHz up to 2.8GHz , TDP 15W
- Intel® Core™ i7-7600U processor, Dual-core, base frequency 2.8GHz up to 3.9GHz , TDP 15W
- Support 1 x DDR3L-1600MHz SO-DIMM slot, up to 8GB
- Support eDP,2 x DDI Tri-display
- Type3 Interface Signals with MXM3.0 Gold Finger

规格 Specification

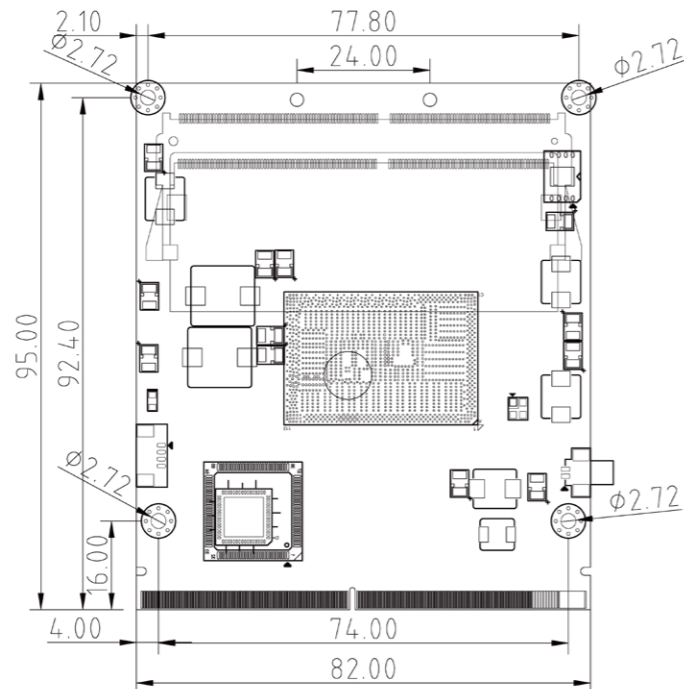
产品型号		NK-L315-3855U/6200U/7600U	
处理器 Processor System	CPU	Intel® 6/7th Gen.U Celeron Core processor, TDP 15W	
	芯片组 Chipset	Intel® SoC integrated	
	BIOS	AMI 128Mb UEFI BIOS	
内存 Memory	技术 Technology	Single Channel(Non-ECC) DDR3L-1600MHz, up to 8GB	
	插槽 Slot	1 x DDR3L 240-pin SO-DIMM slot	
图形 Graphic	控制器 Controller	Intel HD graphics integrated	
扩展接口 Expansion Signals	显示 Display	2 x DDI,1 x eDP	
	串口 Serial Port	2 x Uart(9line),4 x Uart(3line)	
	USB	4 x USB3.0 ,8x USB2.0	
	SATA	2 x SATA 3.0	
	PCIe	5port 8lanes (1x4,1x2,2x1)	
	GPIO	1 x 4bit GPIO	
	音频 Audio	1 x Intel HDA Audio codec	
	Fan	1 x Smart Fan	
	网络 Ethernet	Intel i210AT controller	
	其他 others	1 x I ² C,1 x SMBus,1 x LPC,1 x Buzzer,1 x KB/MS	
	看门狗定时器 Watchdog Timer	输出&间隔 Output&Interval	System reset, programmable from 1~255 seconds
	电源 Power	Power input	5V
操作系统 OS Support	MS Windows	Windows 7(Only support with Intel 6th. CPU)Windows 10	
	Linux	Linux	
机械参数 Mechanism	尺寸 Dimensions	(L)95mm x (W)82mm	
	净重 Gross Weight	0.3kg	
	温度 Temperature	Operating:0°C~60°C with SSD Storage:-40°C~85°C	
环境 Environment	湿度 Humidity	5~95% (Non-condensing)	
	振动 Vibration	5~500Hz, 3Grms operating	

NK-L316-4205U/8145U/8265U

内部接口 Internal I/O



产品尺寸图(Unit:mm)



产品特点Feature

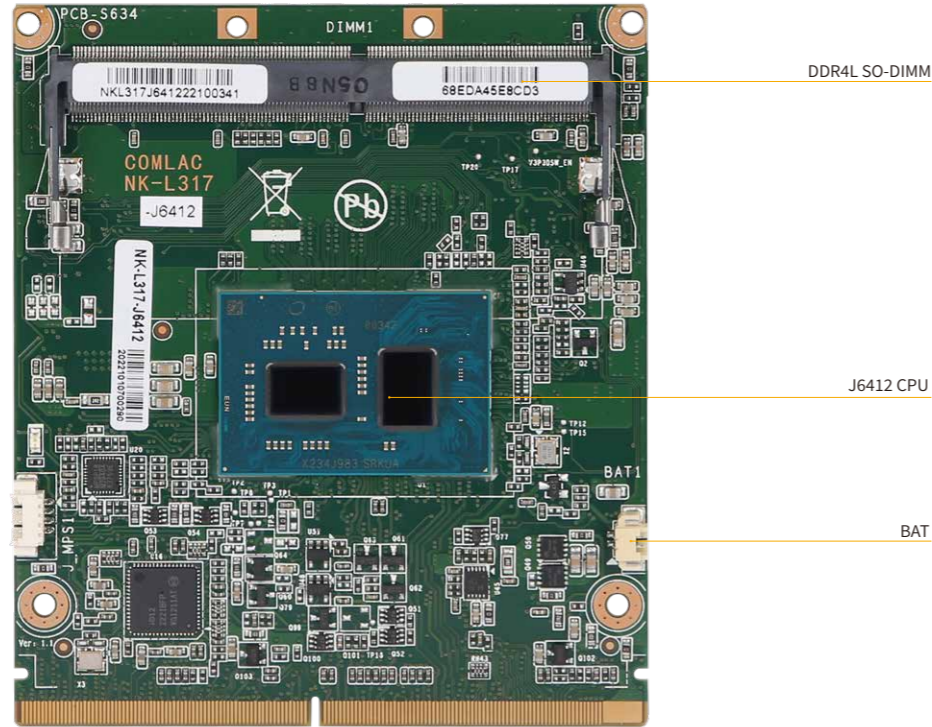
- Intel® Celeron®. 4205U processor, Dual-core, base frequency 1.8GHz , TDP 15W
- Intel® Core™. i3-8145U processor, Dual-core, base frequency 1.6GHz up to 3.9GHz , TDP 15W
- Intel® Core™. i5-8265U processor, Dual-core, base frequency 2.1GHz up to 3.9GHz , TDP 15W
- Support 1 x DDR4-2400MHz SO-DIMM slot, up to 32GB
- Support eDP, 2 x DDI Tri-display
- Type3 Interface Signals with MXM3.0 Gold Finger

规格 Specification

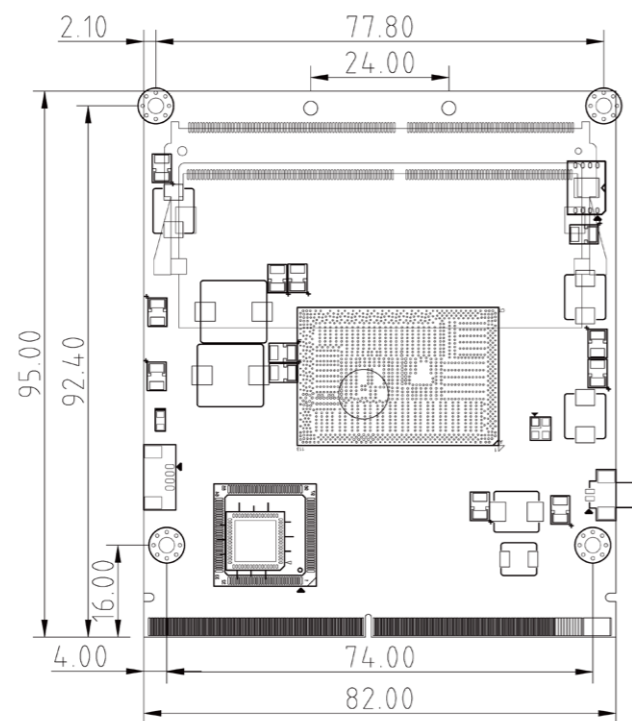
产品型号		NK-L316-4205U/8145U/8265U	
处理器 Processor System	CPU	Intel® 8th Gen. U processor, TDP 15W	
	芯片组 Chipset	Intel® SoC integrated	
	BIOS	AMI 128Mb UEFI BIOS	
内存 Memory	技术 Technology	Single Channel(Non-ECC) DDR4-2400MHz, up to 32GB	
	插槽 Slot	1 x DDR4 260-pin SO-DIMM slot	
图形 Graphic	控制器 Controller	Intel HD graphics integrated	
扩展信号 Expansion Signals	显示 Display	2 x DDI, 1 x eDP	
	串口 Serial Port	2 x Uart(9line), 4 x Uart(3line)	
	USB	4x USB3.0, 8x USB2.0	
	SATA	2 x SATA 3.0	
	PCIe	5 port 8lanes (1 x 4, 1 x 2, 2 x 1)	
	GPIO	1 x 4bit GPIO	
	音频 Audio	1 x Intel HDA Audio codec	
	Fan	1 x Smart Fan	
	网络 Ethernet	Intel i210AT controller	
	其他 others	1 x I ² C, 1 x SMBus, 1 x eSPI, 1 x Buzzer, 1 x KB/MS	
	看门狗定时器 Watchdog Timer	输出&间隔 Output&Interval	System reset, programmable from 1~255 seconds
	电源 Power	Power input	5V
操作系统 OS Support	MS Windows	Windows 10/11	
	Linux	Linux	
机械参数 Mechanism	尺寸 Dimensions	(L)95mm x (W)82mm	
	净重 Gross Weight	0.6kg	
	环境 Environment	温度 Temperature	Operating: 0°C~60°C with SSD Storage: -40°C~85°C
	湿度 Humidity	5~95% (Non-condensing)	
	振动 Vibration	5~500Hz, 3Grms operating	

NK-L317-J6412

内部接口 Internal I/O



产品尺寸图(Unit:mm)



产品特点Feature

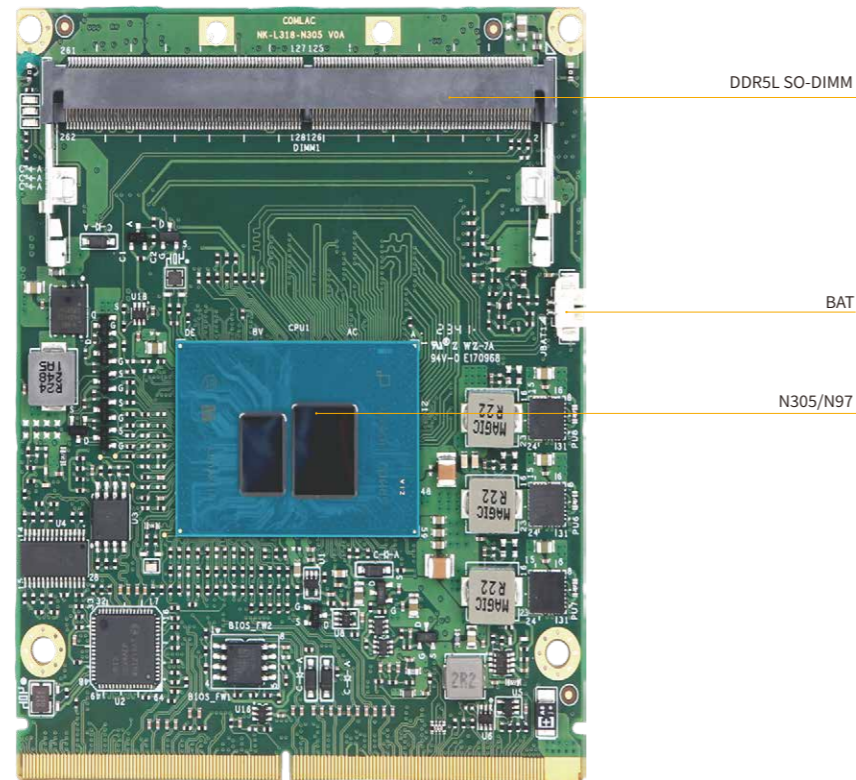
- Intel® Celeron® J6412 processor, Dual-core, base frequency 2.0GHz up to 2.6GHz, TDP 10W
- Support 1 x DDR4-3200MHz SO-DIMM slot, up to 32GB
- Support 2 x DDI, 1 x eDP, Tri-Display
- Type3 Interface Signals with MXM3.0 Gold Finger

规格 Specification

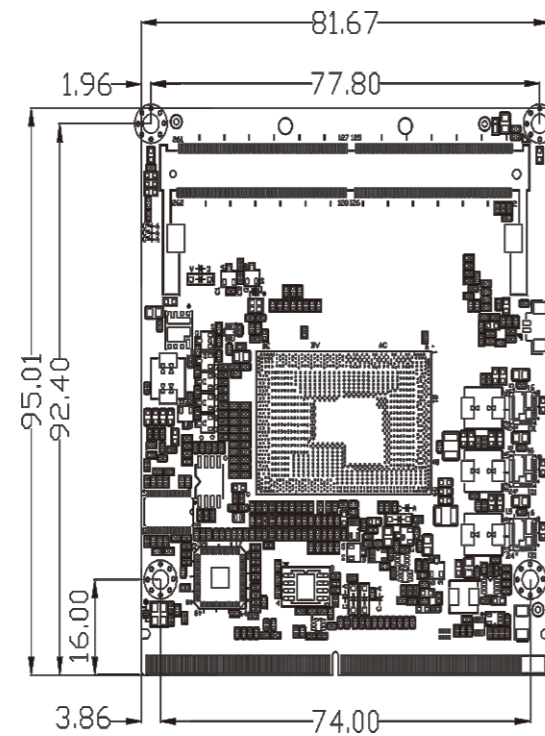
产品型号		NK-L317-J6412	
处理器 Processor System	CPU	Intel® Celeron® J6412 processor, Dual-core, base frequency 2.0GHz up to 2.6GHz, TDP 10W	
	芯片组 Chipset	Intel® SoC integrated	
	BIOS	AMI 128Mb UEFI BIOS	
内存 Memory	技术 Technology	Single Channel(Non-ECC) DDR4-3200MHz, up to 32GB	
	插槽 Slot	1 x DDR4 260-pin SO-DIMM slot	
图形 Graphic	控制器 Controller	Intel HD graphics integrated	
扩展接口 Expansion Signals	显示 Display	2 x DDI, 1 x eDP	
	串口 Serial Port	2 x Uart(9 line), 2 x Uart(3 line)	
	USB	2 x USB3.0, 8x USB2.0	
	SATA	2 x SATA 3.0	
	PCIe	5 port 5lanes (1 x 2, 3 x 1)	
	GPIO	1 x 4bit GPIO	
	音频 Audio	1 x Intel HDA Audio codec	
	Fan	1 x Smart Fan	
	网络 Ethernet	Intel i210AT controller	
	其他 others	1 x eSPI, 1 x I ² C, 1 x SMBus, 1 x Buzzer, 1 x KB/MS	
	看门狗定时器 Watchdog Timer	输出&间隔 Output&Interval	System reset, programmable from 1~255 seconds
	电源 Power	Power input	5V
操作系统 OS Support	MS Windows	Windows 10/11	
	Linux	Linux	
机械参数 Mechanism	尺寸 Dimensions	(L)95mm x (W)82mm	
	净重 Gross Weight	0.6kg	
环境 Environment	温度 Temperature	Operating: 0°C~60°C with SSD Storage: -40°C~85°C	
	湿度 Humidity	10~95% (Non-condensing)	
	振动 Vibration	5~500Hz, 3Grms operating	

NK-L318-N305/N97

内部接口 Internal I/O



产品尺寸图(Unit:mm)



产品特点Feature

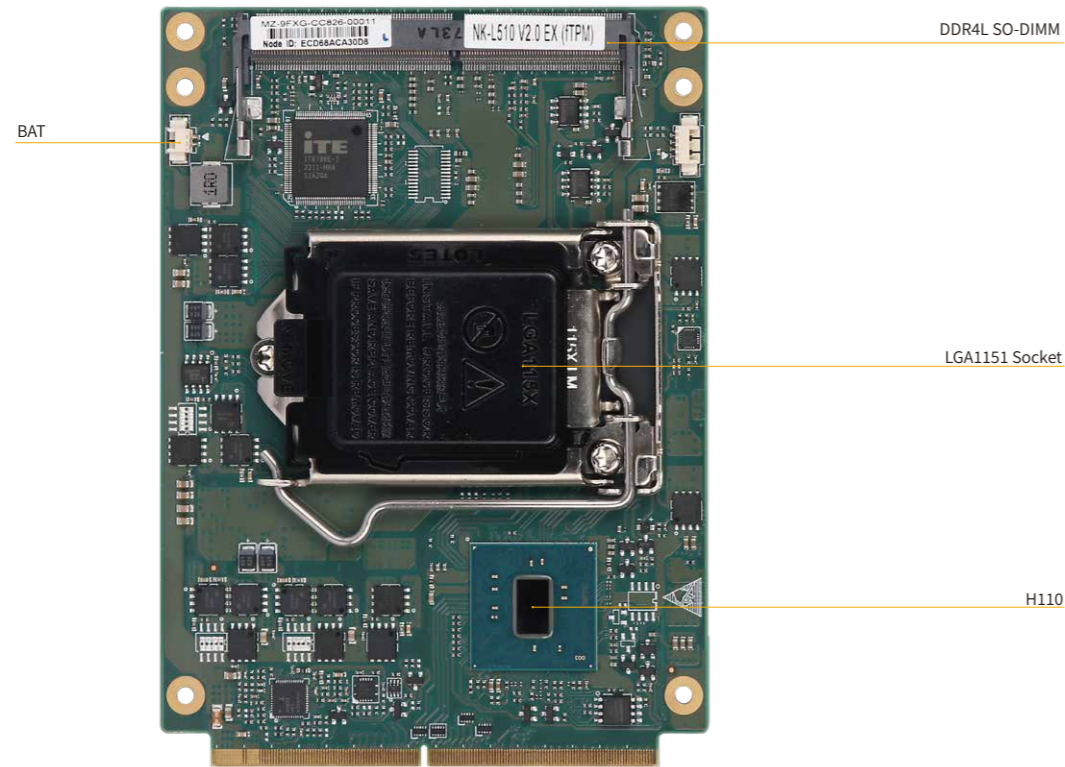
- Intel® Core i3-N305 processor, Octa-core, Max frequency 3.8GHz , TDP 15W
- Intel® N-series N97 processor, Quad-core, Max frequency 3.6GHz , TDP 15W
- Support 1 x DDR5-4800MHz SO-DIMM slot, up to 16GB
- Support 2 x DDI, 1 x eDP, Tri-Display
- Type3 Interface Signals with MXM3.0 Gold Finger

规格 Specification

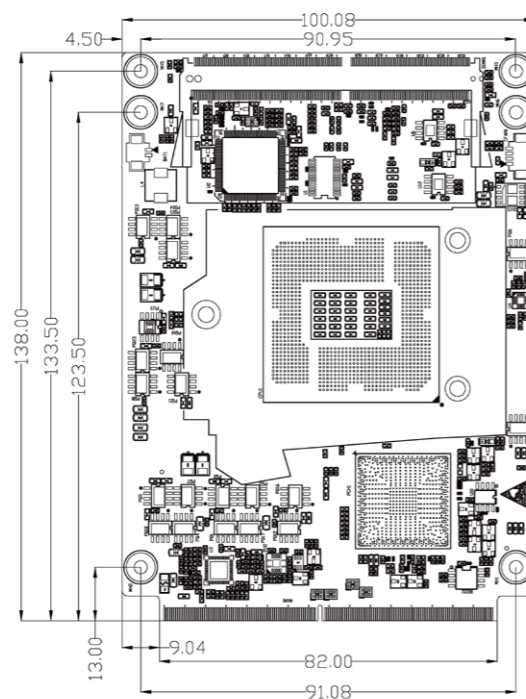
产品型号		NK-L318-J6412
处理器 Processor System	CPU	Intel® Core™ i3-N305/N97 Alder lake N processor, TDP 15W
	芯片组 Chipset	Intel® SoC integrated
	BIOS	AMI 256Mb UEFI BIOS
内存 Memory	技术 Technology	Signal Channel(Non-ECC) DDR5-4800MHz, up to 16GB
	插槽 Slot	1 x DDR5 262-pin SO-DIMM slot
图形 Graphic	控制器 Controller	Intel® UHD Graphics integrated
扩展接口 Expansion Signals	显示 Display	2 x DDI, 1 x eDP
	Ethernet	Intel I210AT controller
	串口 Serial Port	2 x Uart (9 line) , 4 x Uart (3 line)
	USB	2 x USB3.0 , 8 x USB2.0
	Audio	1 x Intel HDA Audio codec
	GPIO	1 x 4bit GPIO
	Fan	1 x Smart FAN
	PCIe	4 port 4 lanes (4 x PCIe (1X2, 2X1))
	SATA	2 x SATA 3.0
	其他 others	1 x I ² C, 1 x Smbus, 1 x Buzzer, 1 x eSPI, 1 x KB/MS
	看门狗定时器 Watchdog Timer	输出&间隔 Output&Interval
电源 Power	Power input	5V
	操作系统 OS Support	Windows10/11 Linux
机械参数 Mechanism	尺寸 Dimensions	(L)95mm x (W)82mm
	净重 Gross Weight	0.8kg
	环境 Environment	温度 Temperature 湿度 Humidity 振动 Vibration

NK-L510-H110

内部接口 Internal I/O



产品尺寸图(Unit:mm)



产品特点Feature

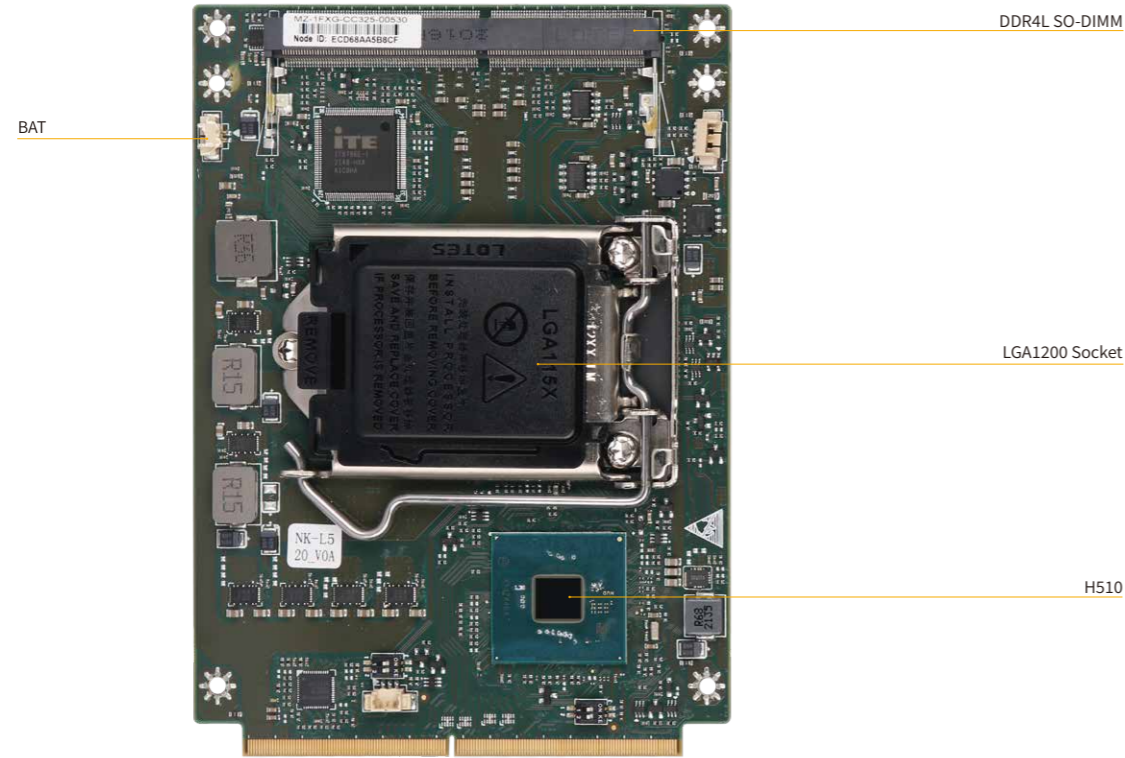
- Intel® 6/7/8/9th Generation Celeron/Pentium/Core-I series LGA1151 processor,TDP up to 65W
- Support dual channel(Non-ECC) DDR4-1866/2133/2400/2666MHz SO-DIMM slot, up to 64GB
- Support 2 x DDI, 1 x eDP,Tris-display
- Type5 Interface Signals with MXM3.0 Gold Finger

规格 Specification

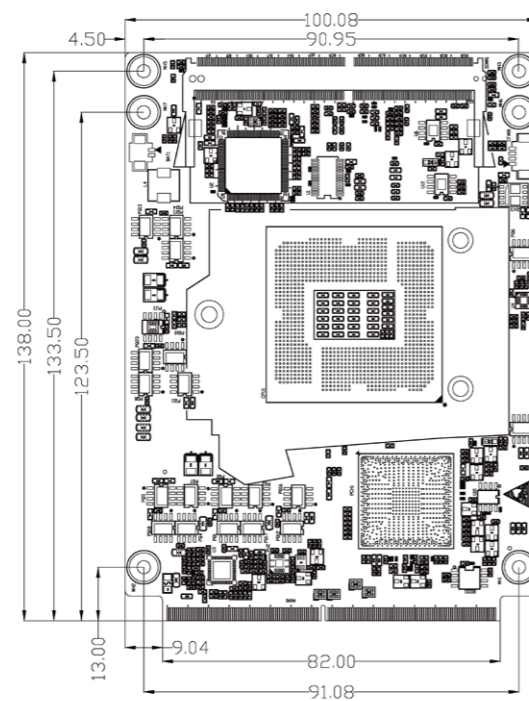
产品型号		NK-L510-H110	
处理器 Processor System	CPU	Intel® 6/7/8/9th Generation Celeron/Pentium/Core-I series LGA1151 processor,TDP up to 65W	
	芯片组 Chipset	Intel® SoC integrated	
	BIOS	AMI 128Mb UEFI BIOS	
内存 Memory	技术 Technology	Dual Channel(Non-ECC) DDR4--1866/2133/2400/2666MHz, up to 64GB	
	插槽 Slot	2 x DDR4 260-pin SO-DIMM slot	
图形 Graphic	控制器 Controller	Intel HD graphics integrated	
	显示 Display	2 x DDI, 1 x eDP	
扩展信号 Expansion Signals	串口 Serial Port	2 x Uart(5line),4 x Uart(3line)	
	USB	4 x USB3.0 Gen2,8 x USB2.0	
	SATA	2 x SATA 3.0	
	PCIe	7 port 6 lanes (1x4, 2x1, 1xGBE (Only support Intel i219-V controller))	
	PCIex16	1 x PCIe X 16	
	GPIO	1 x 2bit GPIO	
	音频 Audio	1 x Intel HDA Audio codec	
	Fan	1 x Smart Fan	
	其他 others	1 x I ² C,1 x SMBus,1 x LPC,1 x Buzzer	
	看门狗定时器 Watchdog Timer	输出&间隔 Output&Interval	System reset, programmable from 1~255 seconds
	电源 Power	Power input	12V
		操作系统 OS Support	MS Windows Linux
机械参数 Mechanism	尺寸 Dimensions	(L)138mm x (W)100.1mm	
	净重 Gross Weight	0.6kg	
环境 Environment	温度 Temperature	Operating: 0°C~60°C with SSD Storage: -40°C~85°C	
	湿度 Humidity	10~95% (Non-condensing)	
	振动 Vibration	5~500Hz, 3Grms operating	

NK-L520-H510

内部接口 Internal I/O



产品尺寸图(Unit:mm)



产品特点Feature

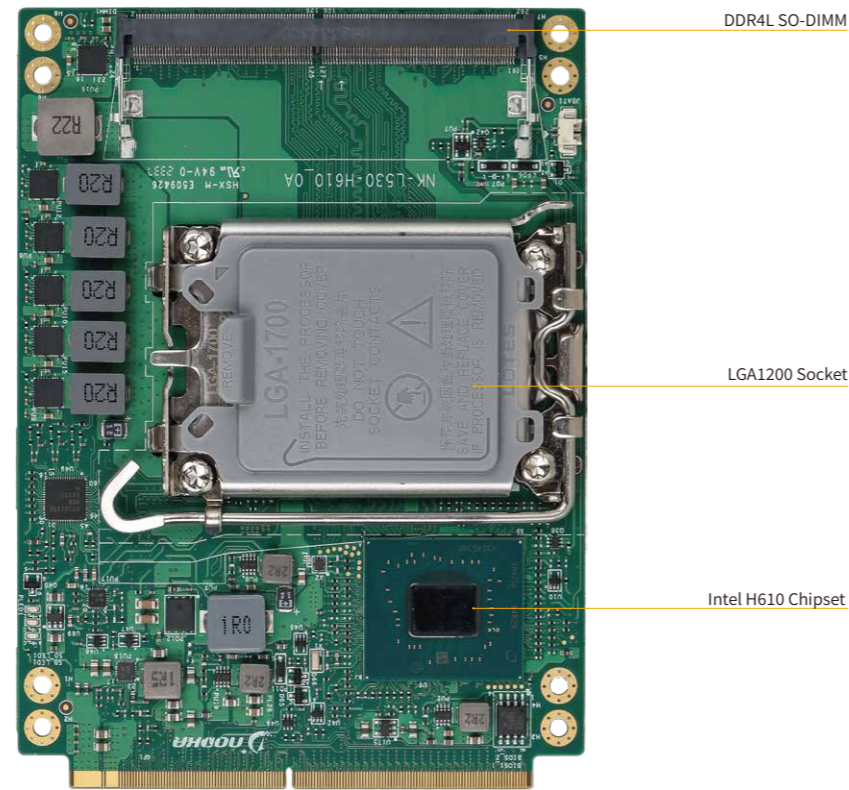
- Intel® 10/11 th Generation Celeron/Pentium/Core-I series LGA1200 processor,TDP up to 65W
- Support dual channel(Non-ECC) DDR4-3200MHz SO-DIMM slot, up to 64GB
- Support 2 x DDI, 1 x eDP,Dual-display
- Type5 Interface Signals with MXM3.0 Gold Finger

规格 Specification

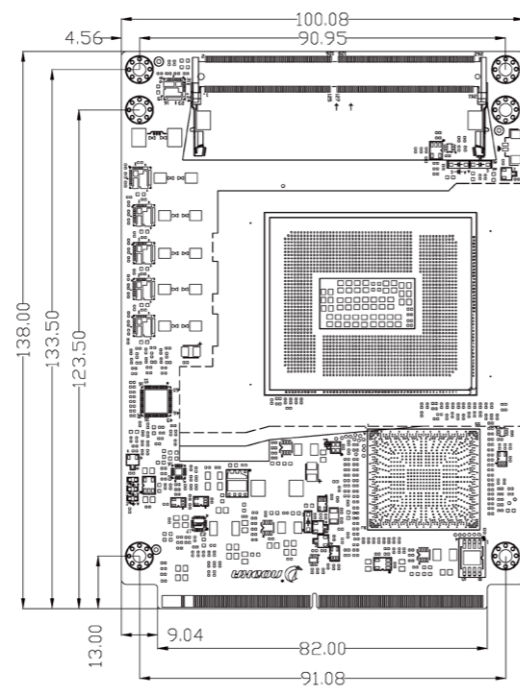
产品型号		NK-L520-H510	
处理器 Processor System	CPU	Intel® 10/11 th Generation Celeron/Pentium/Core-I series LGA1200 processor,TDP up to 65W	
	芯片组 Chipset	Intel® SoC integrated	
	BIOS	AMI 256Mb UEFI BIOS	
内存 Memory	技术 Technology	Dual Channel(Non-ECC) DDR4-3200MHz, up to 64GB	
	插槽 Slot	2 x DDR4 260-pin SO-DIMM slot	
图形 Graphic	控制器 Controller	Intel HD graphics integrated	
	显示 Display	2 x DDI, 1 x eDP	
扩展信号 Expansion Signals	串口 Serial Port	2 x Uart(5line),4 x Uart(3line)	
	USB	4 x USB3.0,8 x USB2.0	
	SATA	2 x SATA 3.0	
	PCIe	6 port 6 lanes (1x4, 2x1, 1xGBE (Only support Intel i219-V controller))	
	PCIex16	1 x PCIe x 16	
	GPIO	1 x 2bit GPIO	
	音频 Audio	1 x Intel HDA Audio codec	
	Fan	1 x Smart Fan	
	其他 others	1 x I ² C,1 x SMBus,1 x LPC,1 x Buzzer	
	看门狗定时器 Watchdog Timer	输出&间隔 Output&Interval	System reset, programmable from 1~255 seconds
	电源 Power	Power input	12V
操作系统 OS Support		Windows 10/11 Linux	
机械参数 Mechanism	尺寸 Dimensions	(L)138mm x (W)100.1mm	
	净重 Gross Weight	0.6kg	
	环境 Environment	温度 Temperature 湿度 Humidity 振动 Vibration	Operating: 0°C~60°C with SSD Storage: -40°C~85°C 10~95% (Non-condensing) 5~500Hz, 3Grms operating

NK-L530-H610

内部接口 Internal I/O



产品尺寸图(Unit:mm)



产品特点Feature

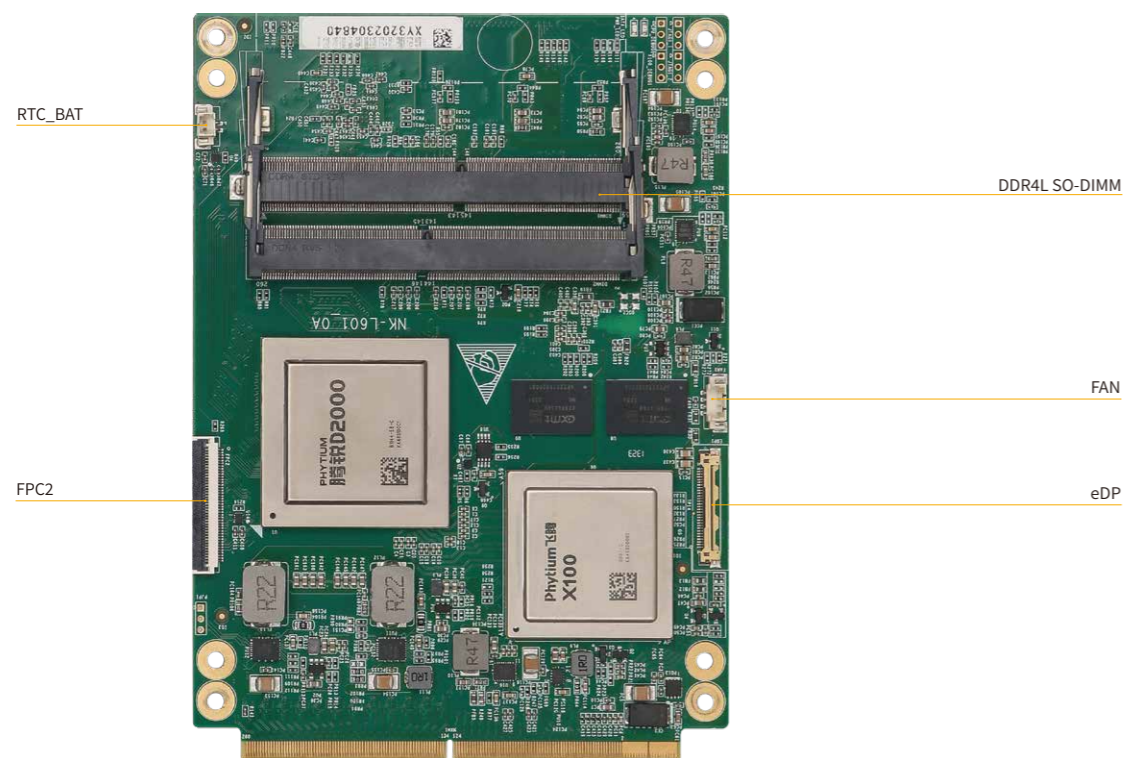
- Intel® 12/13 th Generation Celeron/Pentium/Core-I series LGA1700 processor,TDP up to 65W
- Support dual channel(Non-ECC) DDR5-4800MHz SO-DIMM slot, up to 64GB
- Support 2 x DDI, 1 x eDP,Dual-display
- Type5 Interface Signals with MXM3.0 Gold Finger

规格 Specification

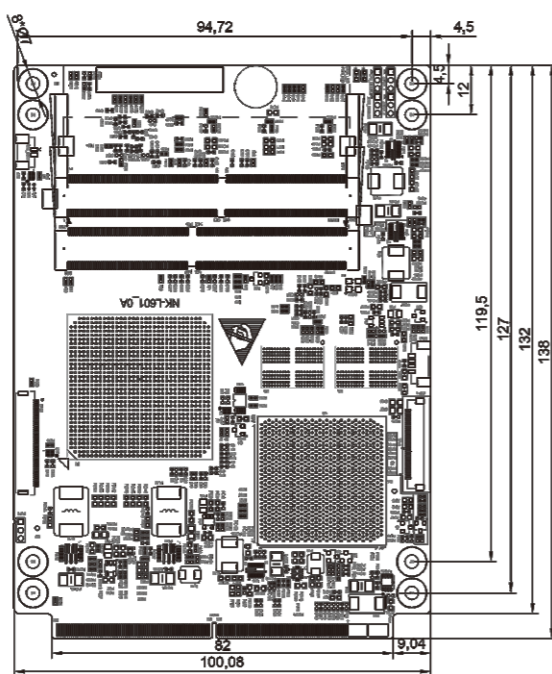
产品型号		NK-L530-H610	
处理器 Processor System	CPU	Intel® 12/13th Generation Celeron/Pentium/Core-I series processor, TDP up to 65W	
	插槽 Socket	LGA1700	
	芯片组 Chipset	Intel H610	
	BIOS	AMI 256Mb UEFI BIOS	
内存 Memory	技术 Technology	Dual Channel(Non-ECC) DDR5-4800MHz, up to 64GB	
	插槽 Slot	2 x DDR5 262-pin SO-DIMM slot	
图形 Graphic	控制器 Controller	Intel® UHD Graphics integrated	
	显示 Display	2 x DDI, 1 x eDP	
扩展接口 Expansion Signals	串口 Serial Port	2 x UART(5 line), 4 x UART(3 line)	
	USB	4 x USB3.0, 8 x USB2.0	
	PCIe X16	1 x PCIeX16 lane(Gen4)	
	PCIe	6 port 6 lanes (1 x PCIe X4, up to 2 x PCIe)	
	音频 Audio	1 x Intel HDA Audio codec	
	GPIO	1 x 2bit GPIO (1in & 1out)	
	I²C	1 x I²C	
	LPC	1 x LPC/ eSPI	
	Smbus	1 x Smbus	
	Smart Fan	1 x FAN	
	SATA	2 x SATA 3.0	
	Buzzer	1 x Buzzer	
	看门狗定时器 Watchdog Timer	输出&间隔 Output&Interval	System reset, programmable from 1~255 seconds
	电源 Power	Power input	12V DC input
		功耗 Power Consumption	TBD
操作系统 OS Support	MS Windows	Windows10/11	
	Linux	Linux	
机械参数 Mechanism	尺寸 Dimensions	(L)138mm x (W)100.1mm	
	净重 Gross Weight	0.8kg	
	温度 Temperature	Operating: -20°C~70°C with SSD Storage: -40°C~85°C	
环境 Environment	湿度 Humidity	5~95% (Non-condensing)	
	振动 Vibration	5~500Hz, 3Grms operating	

NK-L601-D2000

内部接口 Internal I/O



产品尺寸图 (Unit:mm)



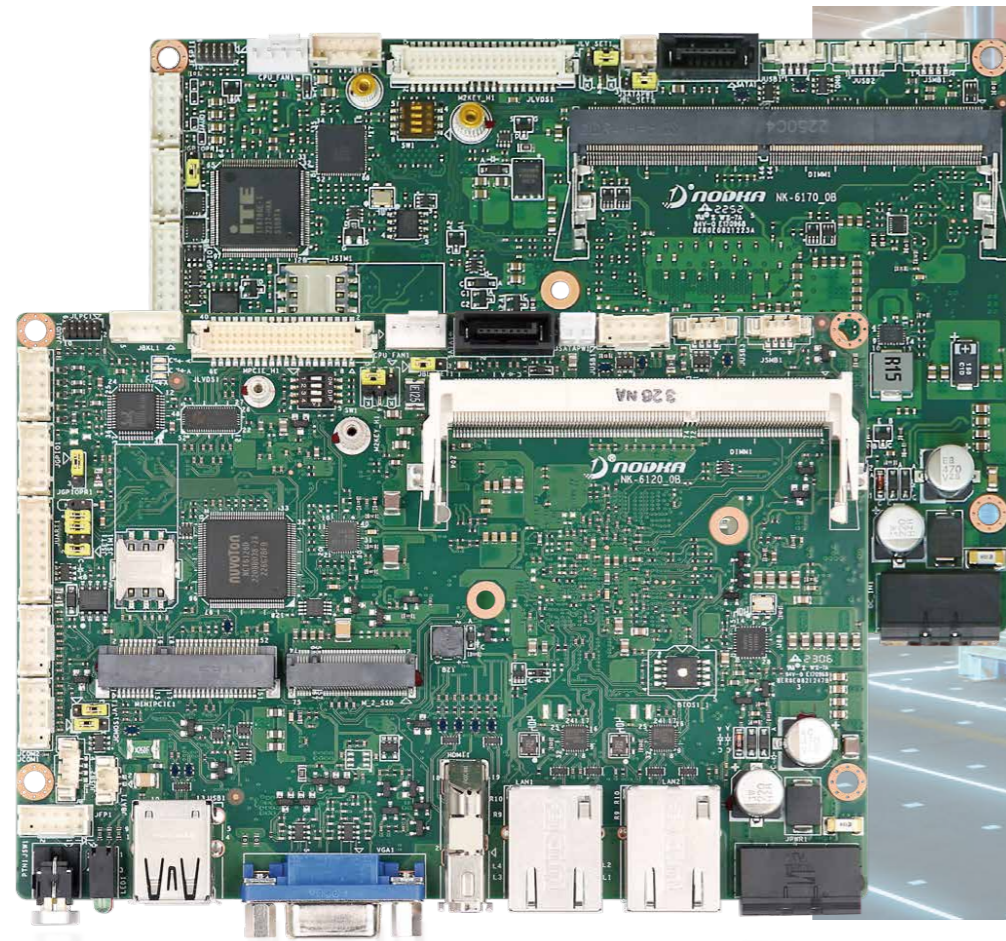
产品特点 Feature

- Phytium D2000 Processor, 8-core, base frequency 2.0GHz up to 2.6GHz , TDP 55W
- Support 2 x DDR4-2666MHz SO-DIMM slot, up to 64GB
- Support 1 x eDP, Can be displayed by extension on the board
- NODKA Type6 Interface Signals with MXM3.0 Gold Finger

规格 Specification

产品型号		NK-L601-D2000	
处理器 Processor System	CPU	Phytium D2000 Processor, 8-core, base frequency 2.0GHz up to 2.6GHz , TDP 55W	
	芯片组 Chipset	Phytium X100	
	BIOS	UEFI	
内存 Memory	技术 Technology	Dual-Channel(Non-ECC/ECC)DDR4-2666MHz, up to 64GB	
	插槽 Slot	2 x DDR4 260-pin SO-DIMM slot	
图形 Graphic	控制器 Controller	Independent video memory with CXMT 4GB LPDDR4	
MXM接口	显示 Display	3 x DDI	
	PCIE		1*PCIEx16
			1*PCIEx4
			2*PCIEx2
			2*PCIEx1
	SATA	2 x SATA 3.0 (6Gpbs)	
	USB	4 x USB3.0 (5Gb/s) 2 x USB2.0 (480Mbps)	
	DP	2 x DP	
	串口 Serial Port	1 x Uart for debug	
	串口 Serial Port	6 x Uart ¹	
FPC1 Connect	CAN	2 x CAN	
	GPIO	8 x GPIO	
	USB	2 x USB2.0	
FPC2 Connect	GPIO	12 x GPIO	
	HDA	1 x HDA	
操作系统 OS Support	Linux	KylinOS, 统信UOS	
机械参数 Mechanism	尺寸 Dimensions	(L)138mm x(W)100mm	
	净重 Gross Weight	0.095kg	
环境 Environment	温度 Temperature	Operating: -20°C~50°C with industrial environment	
		-40°C~60°C with wide temperature	
	Storage: -25°C~55°C with Industrial		
湿度 Humidity	-45°C~65°C with wide temperature		
振动 Vibration	5~95% (Non-condensing)		
		5~500Hz, 3Grms operating	

[1]COM1~2 is full line signal. COM3~6 only have TX and RX signal.



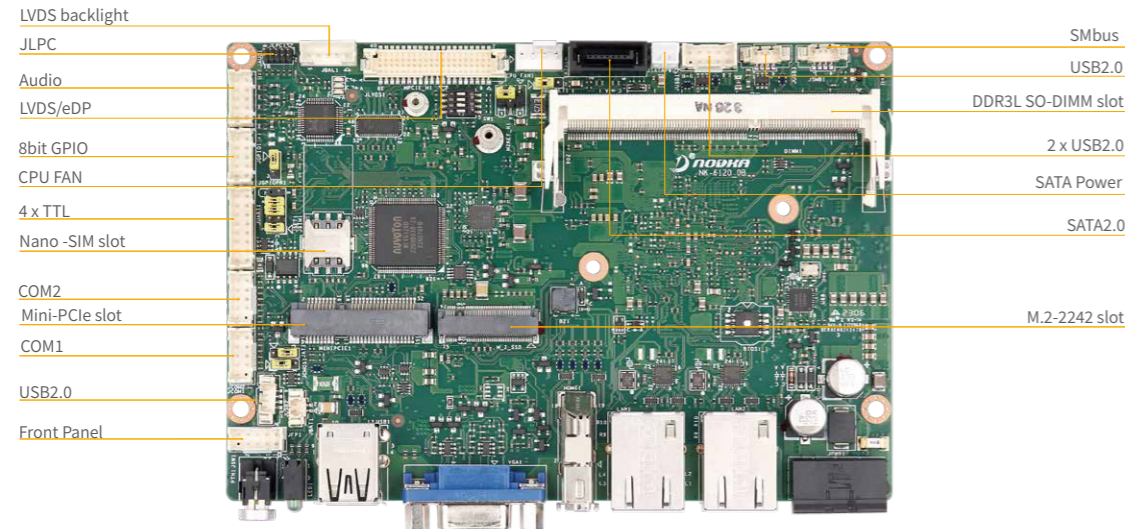
嵌入式工业主板

嵌入式工业主板支持宽温宽压, 为各种嵌入式应用与系统集成所设计, 主要采用Intel低功耗处理器, 具有丰富的I/O接口, 可以根据需求灵活选配多种扩展模块, 满足严苛的工业应用场景。

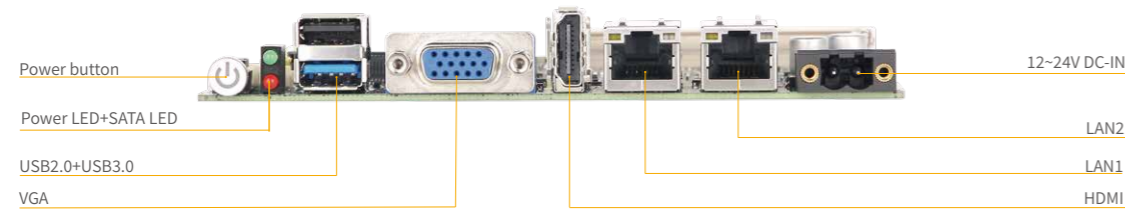
NK-6120

Intel® Celeron® J1900 processor, Quad-core, base frequency 2.0GHz, TDP 10W

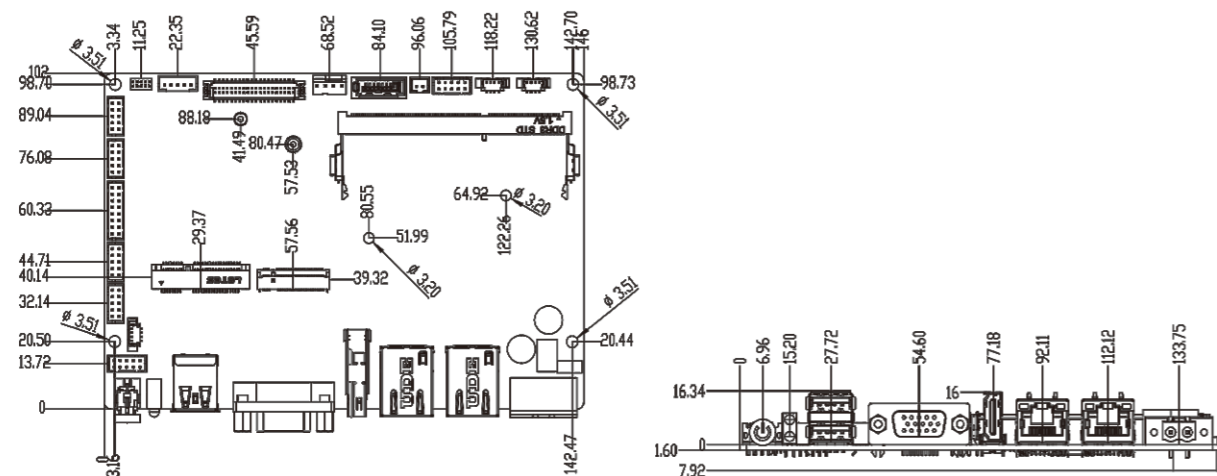
内部接口 Internal I/O



外部接口 Rear I/O



产品尺寸图 (Unit:mm)



产品特点 Feature

- Intel® Celeron® J1900 processor, Quad-core, base frequency 2.0GHz, TDP 10W
- Support 1x DDR3L-1333MHz SO-DIMM slot, up to 8GB
- Support VGA, HDMI, LVDS/eDP Dual-display
- 2 x Giga-bit Ethernet
- 1 x USB3.0 port, 5 x USB2.0 ports
- 1 x RS232/485, 1 x RS232, 4 x TTL
- 1 x M.2-2242 and 1 x Mini-PCIe slot with nano-SIM card socket
- 12~24V power input, lockable DC-IN phoenix terminal block

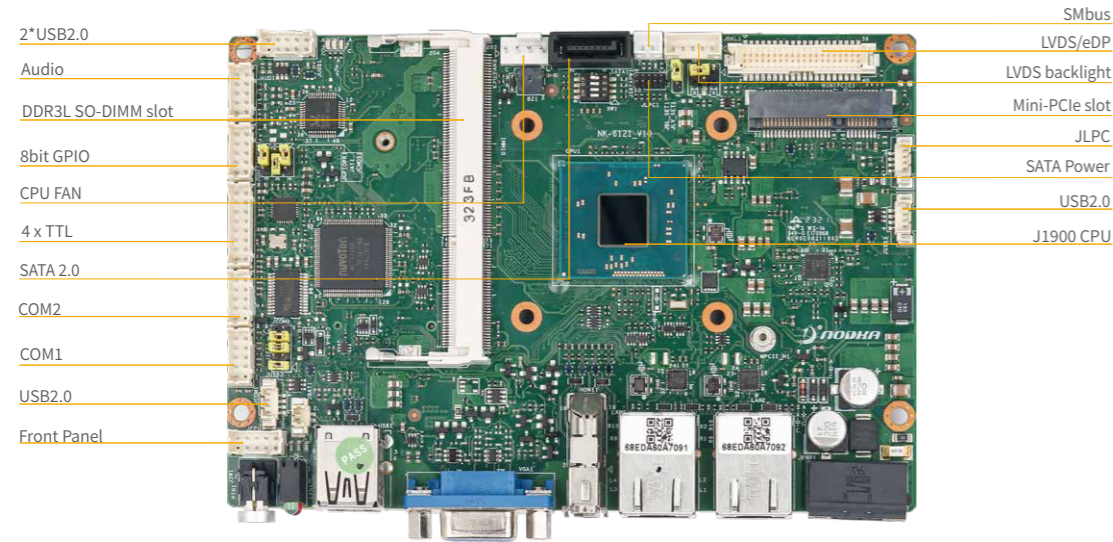
规格 Specification

产品型号	NK-6120	
处理器 Processor System	CPU	Intel® Celeron® J1900 processor 2.0GHz, TDP 10W
	芯片组 Chipset	Intel® SoC integrated
	BIOS	AMI 64Mb UEFI BIOS
内存 Memory	技术 Technology	Single Channel(Non-ECC) DDR3L 1333MHz, up to 8GB
	插槽 Slot	1 x DDR3L 240-pin SO-DIMM slot
存储 Storage	SATA	1 x SATA2.0 port
	M.2	1 x M.2-2242 M Key SSD slot(SATA2.0)
图形 Graphic	控制器 Controller	Intel HD graphics integrated
音频 Audio	编码器 Codec	Realtek ALC888S Colay ALC897codec
外部接口 Rear I/O	显示 Display	1 x VGA, resolution up to 2560x1600@60Hz 1 x HDMI, resolution to 1920x1080@60Hz
	网络 Ethernet	2 x GbE(RJ45), Realtek 8111H controller
	USB	1 x USB3.0(5Gbps), 1 x USB2.0(480Mbps)
	开关按钮 Button	1 x Power Button(White for power on,Blink for sleep mode,Off for power off)
	指示灯 Indicators	1 x SATA LED(Red), 1 x Power LED(Green)
内部接口 Internal I/O	显示 Display	1 x LVDS, dual channel 24/48bit, resolution up to 1920x1200@60Hz 1 x eDP1.3, max resolution up to 3840x2160@60Hz(share connector with LVDS)
	音频 Audio	1 x Audio wafer(Mic-in/Line-out, 2*5pin)
	USB	2 x USB2.0 wafer(1*4pin), 2 x USB2.0 wafer(1 x 2*5pin)
	串口 Serial Port	1 x RS232/485 wafer(2*5pin), 1 x RS232 wafer(2*5pin), 4 x TTL wafer(2*8pin)
	风扇 Fan	1 x Smart Fan wafer(1*4pin)
	SMBus	1 x SMBus wafer(1*4pin)
	LPC	1 x LPC header for debug
	其他 Others	1 x Front panel wafer(2*5pin)(Power LED, HDD LED, Power button, Reset button)
扩展接口 Expansion Slots	Mini-PCIe slot	1 x Mini-PCIe slot with Nano-SIM socket (PCIe/USB2.0)
看门狗定时器 Watchdog Timer	输出&间隔 Output&Interval	System reset, programmable from 1~255 seconds
电源 Power	类型 Type	12~24V DC input, +/-10% tolerance
	接口 Interface	1 x 2-pin phoenix terminal block
	功耗 Power Consumption	16.3W (Idle mode), 17.5W(Typical mode)
操作系统 O.S Support	MS Windows	Windows7/10
	Linux	Linux
机械参数 Mechanism	尺寸 Dimensions	(L)146mm x (W)102mm
	净重 Gross Weight	0.8kg
环境 Environment	温度 Temperature	Operating: -10°C~60°C with SSD Storage: -40°C~85°C
	湿度 Humidity	5~95% (Non-condensing)
	振动 Vibration	5~500Hz, 3Grms operating

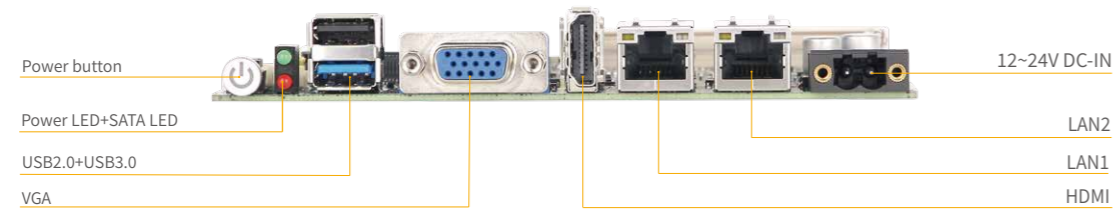
NK-6121

Intel® Celeron® J1900 processor, Quad-core, base frequency 2.0GHz, TDP 10W

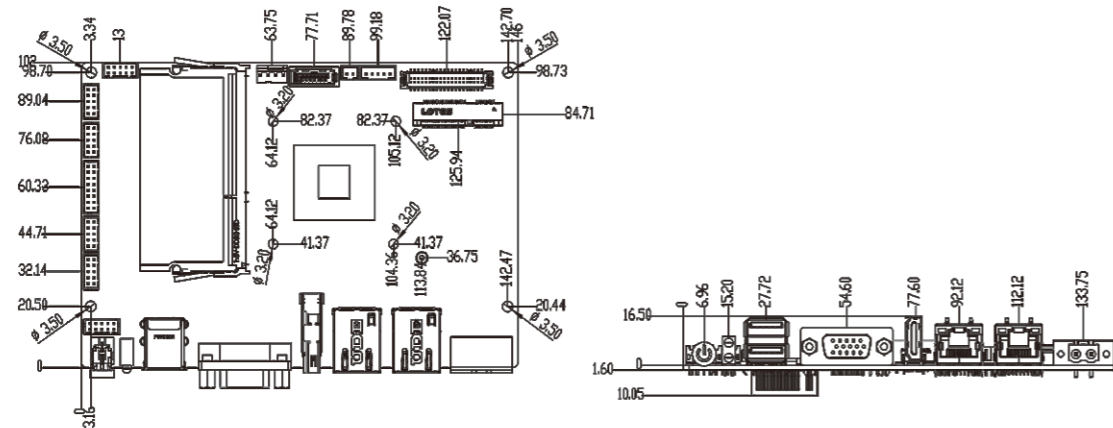
内部接口 Internal I/O



外部接口 Rear I/O



产品尺寸图(Unit:mm)



产品特点Feature

- Intel® Celeron® J1900 processor, Quad-core, base frequency 2.0GHz, TDP 10W
- Support 1xDDR3L-1333MHz SO-DIMM slot, up to 8GB
- Support VGA, HDMI, LVDS/eDP Dual-display
- 2xGiga-bit Ethernet
- 1xUSB3.0 port, 5xUSB2.0 ports
- 1xRS232/485, 1xRS232, 4xTTL
- 1 x M.2-2242 and 1 x Mini-PCle slot with nano-SIM card socket
- 12~24V power input, lockable DC-IN phoenix terminal block

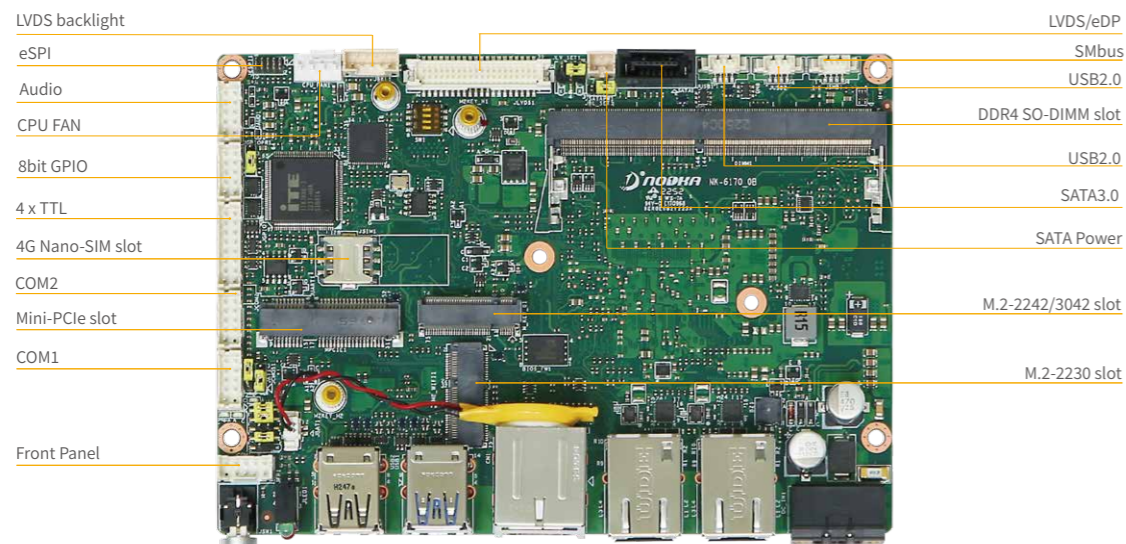
规格 Specification

产品型号	NK-6121	
处理器 Processor System	CPU	Intel® Celeron® J1900 processor 2.0GHz
	芯片组 Chipset	Intel® SoC integrated
	BIOS	AMI 64Mb UEFI BIOS
内存 Memory	技术 Technology	Single Channel(Non-ECC) DDR3L-1333MHz, up to 8GB
	插槽 Slot	1 x DDR3L 240-pin SO-DIMM slot
存储 Storage	SATA	1 x SATA2.0 port
	M.2	1 x M.2-2242 M Key SSD slot(SATA2.0)
图形 Graphic	控制器 Controller	Intel HD graphics integrated
音频 Audio	编码器 Codec	Realtek ALC897 codec
外部接口 Rear I/O	显示 Display	1 x VGA, resolution up to 2560x1600@60Hz 1 x HDMI, resolution up to 1920x1080@60Hz
	网络 Ethernet	2 x GbE(RJ45), Realtek 8111H controller
	USB	1 x USB3.0(5Gbps), 1 x USB2.0(480Mbps)
	开关按钮 Button	1 x Power Button(White for power on,Blink for sleep mode,Off for power off)
	指示灯 Indicators	1 x SATA LED(Red), 1 x Power LED(Green)
内部接口 Internal I/O	显示 Display	1 x LVDS, dual channel 18/24bit, resolution up to 1920x1200@60Hz 1 x eDP1.3, max resolution up to 3840x2160@60Hz(share connector with LVDS)
	音频 Audio	1 x Audio wafer(Mic-in/Line-out, 2*5pin)
	USB	2 x USB2.0 wafer(1*4pin), 2 x USB2.0 wafer(1 x 2*5pin)
	串口 Serial Port	1 x RS232/RS485 wafer(2*5pin), 1 x RS232 wafer(2*5pin),4 x TTL wafer(2*8pin)
	风扇 Fan	1 x Smart Fan wafer(1*4pin)
	SMBus	1 x SMBus wafer(1*4pin)
	LPC	1 x LPC header for debug
	其他 Others	1 x Front panel wafer(2*5pin)(Power LED, HDD LED, Power button, Reset button)
扩展接口 Expansion Slots	Mini-PCle slot	1 x Mini-PCle slot with Nano-SIM socket(PCIE/USB2.0)
看门狗定时器 Watchdog Timer	输出&间隔 Output&Interval	System reset, programmable from 1~255 seconds
电源 Power	类型 Type	12~24V DC input, +/-10% tolerance
	接口 Interface	1 x 2-pin phoenix terminal block
	功耗 Power Consumption	16.3W(Idle mode), 17.5W(Typical mode)
操作系统 O.S Support	MS Windows	Windows7/10
	Linux	Linux
机械参数 Mechanism	尺寸 Dimensions	(L)146mm x (W)102mm
	净重 Gross Weight	0.8kg
环境 Environment	温度 Temperature	Operating: -10°C~60°C with SSD Storage: -40°C~85°C
	湿度 Humidity	5~95% (Non-condensing)
	振动 Vibration	5~500Hz, 3Grms operating

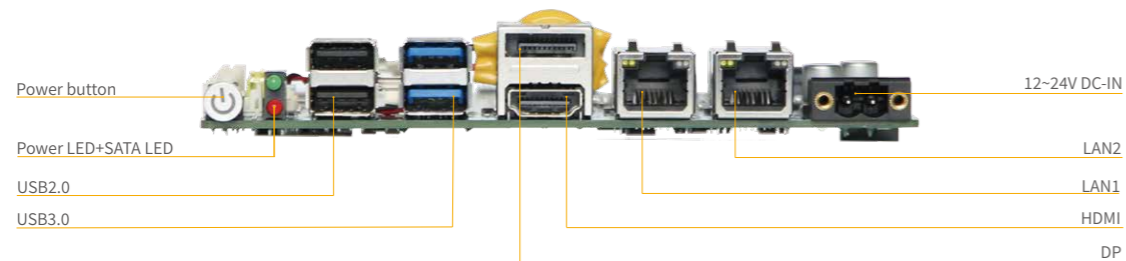
NK-6170

Intel® Celeron® J6412 processor, Quad-core, base frequency 2.0GHz up to 2.6 GHz, TDP 10W

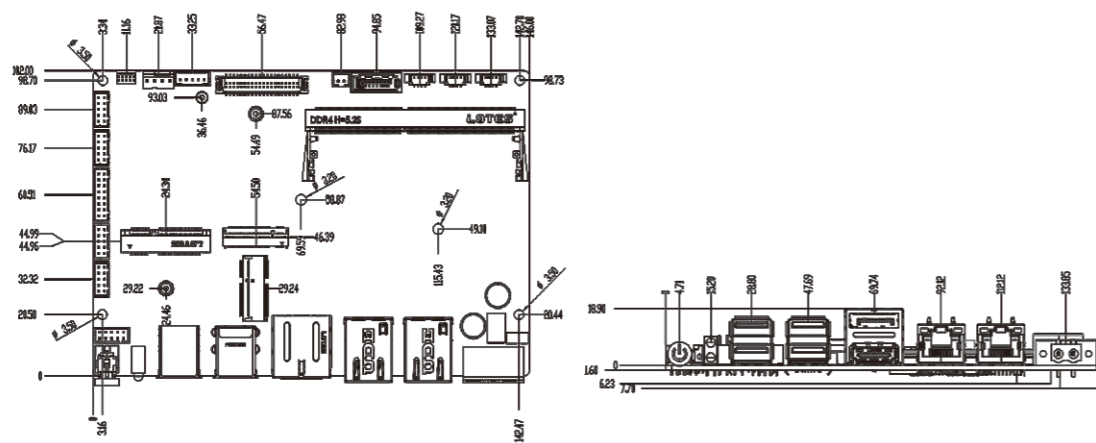
内部接口 Internal I/O



外部接口 Rear I/O



产品尺寸



产品特点 Feature

- Intel® Celeron® J6412 processor, Quad-core, base frequency 2.0GHz up to 2.6 GHz, TDP 10W
- Support 1x DDR4-3200MHz SO-DIMM slot, up to 32GB
- Support DP, HDMI, LVDS/eDP Tri-display
- 2 x Giga-bit Ethernet
- 2 x USB3.0ports, 4 x USB2.0 ports
- 1 x RS232/485, 1 x RS232, 4 x TTL
- 1 x M.2-2230, 1 x M.2-2242/3042 and 1 x Mini-PCle slot with nano-SIM card socket
- 12~24V power input, lockable DC-IN phoenix terminal block

规格 Specification

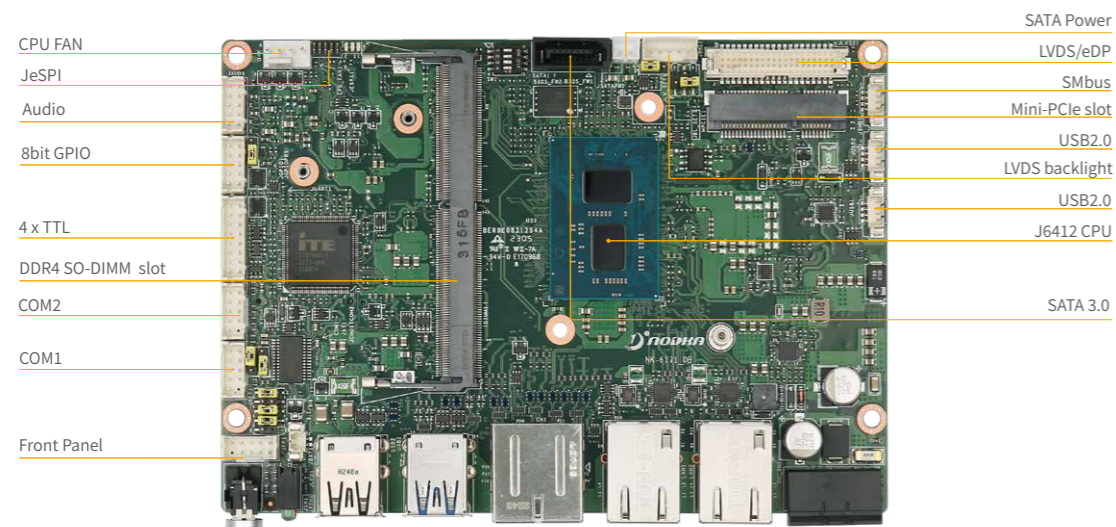
产品型号		NK-6170
处理器 Processor System	CPU	Intel® Celeron® J6412 processor (2.0GHz, up to 2.6GHz), TDP 10W
	芯片组 Chipset	Intel® SoC integrated
	BIOS	AMI 128Mb UEFI BIOS
内存 Memory	技术 Technology	Single Channel(Non-ECC) DDR4 3200MHz, up to 32GB
	插槽 Slot	1 x DDR4 260-pin SO-DIMM slot
存储 Storage	SATA	1 x SATA3.0 port
	M.2	1 x M.2-2242 M Key SSD slot(SATA3.0)
图形 Graphic	控制器 Controller	Intel® UHD graphics integrated
音频 Audio	编码器 Codec	Realtek ALC897 codec
外部接口 Rear I/O	显示 Display	1 x DP1.4, resolution up to 4096x2160@60Hz 1 x HDMI, resolution to 4096 x 2160@30Hz
	网络 Ethernet	2 x GbE(RJ45), Realtek 8111H controller
	USB	2 x USB3.0(5Gbps), 2 x USB2.0
	开关按钮 Button	1 x Power Button(White for power on, Blink for sleep mode, Off for power off)
	指示灯 Indicators	1 x SATA LED(Red), 1 x Power LED(Green)
内部接口 Internal I/O	显示 Display	1 x LVDS, dual channel 18/24bit, resolution up to 1920x1200@60Hz 1 x eDP1.3, resolution up to 4096x2160@60Hz(share connector with LVDS)
	音频 Audio	1 x Audio wafer(Mic-in/Line-out, 2*5pin)
	USB	2 x USB2.0 wafer(1*4pin)
	串口 Serial Port	1 x RS232/RS485 wafer(2*5pin), 1 x RS232 wafer(2*5pin), 4 x TTLwafer(2*4pin)
	风扇 Fan	1 x Smart Fan wafer(1*4pin)
	SMBus	1 x SMBus wafer(1*4pin)
	eSPI	1 x eSPI header for debug
	其他 Others	1 x Front panel wafer(2*5pin)(Power LED, HDD LED, Power button, Reset button)
扩展接口 Expansion Slots	M.2 slot	1 x M.2-3042 B Key slot ^[Note1] with Nano-SIM socket for 5G communication module (USB3.0) 1 x M.2-2230 E key slot for wifi module(PCIe/USB2.0)
	Mini-PCle slot	1 x Mini-PCle slot with Nano-SIM socket
安全 Security	TPM	fTPM2.0 supported
看门狗定时器 Watchdog Timer	输出&间隔 Output&Interval	System reset, programmable from 1~255 seconds
电源 Power	类型 Type	12~24V DC input, +/-10% tolerance
	接口 Interface	1 x 2-pin phoenix terminal block
操作系统 O.S Support	功耗 Power Consumption	16.3W(Idle mode), 17.5(Typical mode)
	MS Windows	Windows10/11
机械参数 Mechanism	Linux	Linux
	尺寸 Dimensions	(L)146mm x (W)102mm
环境 Environment	净重 Gross Weight	0.8kg
	温度 Temperature	Operating: -10°C~60°C with SSD Storage: -40°C~85°C
	湿度 Humidity	5~95% (Non-condensing)
	振动 Vibration	5~500Hz, 3Grms operating

[Note1]: M.2-3042 B Key slot co-lay M.2-2242 M Key slot.

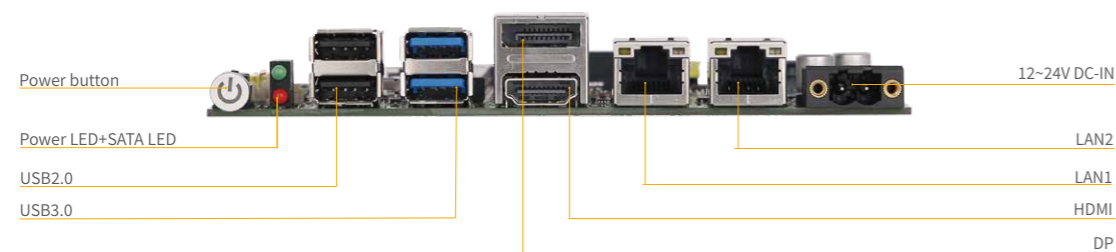
NK-6171

Intel® Celeron® J6412 processor, Quad-core, base frequency 2.0GHz up to 2.6 GHz, TDP 10W

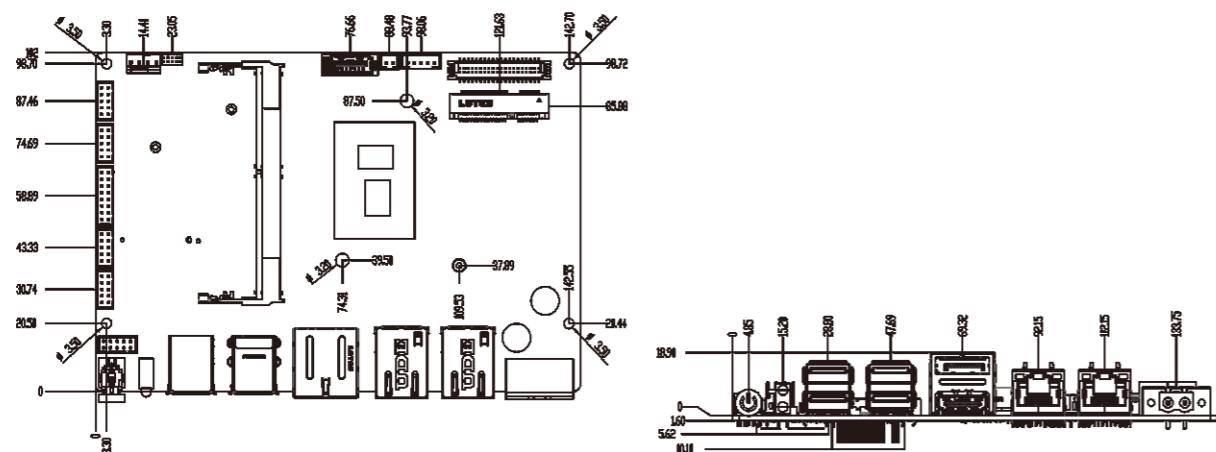
内部接口 Internal I/O



外部接口 Rear I/O



产品尺寸图 (Unit:mm)



产品特点 Feature

- Intel® Celeron® J6412 processor, Quad-core, base frequency 2.0GHz up to 2.6 GHz, TDP 10W
- Support 1x DDR4-3200MHz SO-DIMM slot, up to 32GB
- Support DP, HDMI, LVDS/eDP Tri-display
- 2 x Giga-bit Ethernet
- 2 x USB3.0 ports, 4 x USB2.0 ports
- 1 x RS232/485, 1 x RS232, 4 x TTL
- 1 x M.2-2242, 1 x M.2-2230 and 1 x Mini-PCIe slot with nano-SIM card socket
- 12~24V power input, lockable DC-IN phoenix terminal block

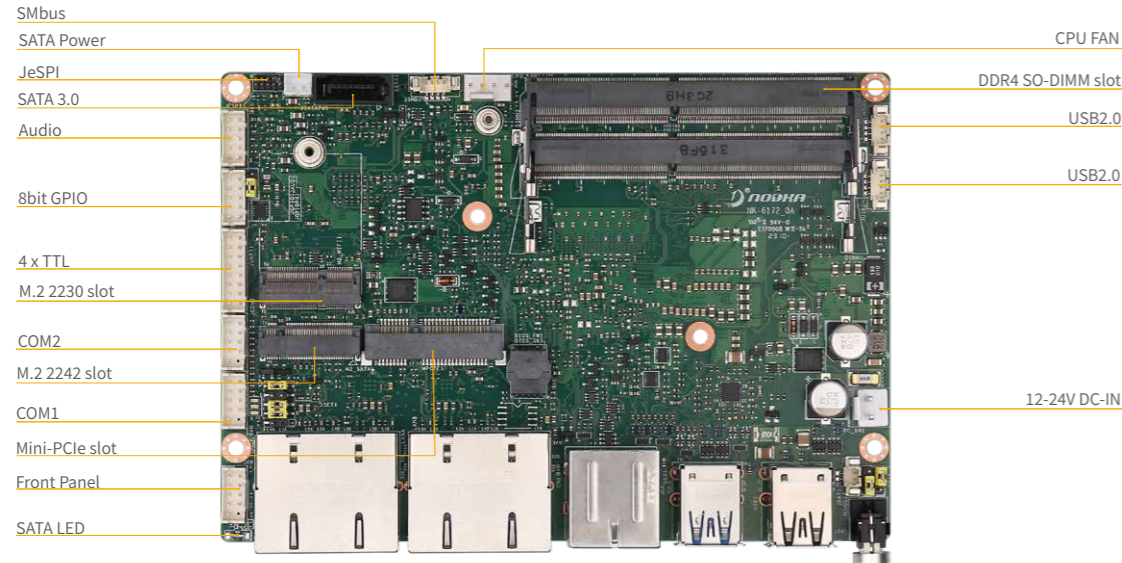
规格 Specification

产品型号		NK-6171
处理器 Processor System	CPU	Intel® Celeron® J6412 processor 2.0GHz, up to 2.6GHz, TDP 10W
	芯片组 Chipset	Intel® SoC integrated
	BIOS	AMI 128Mb UEFI BIOS
内存 Memory	技术 Technology	Single Channel(Non-ECC) DDR4 3200MHz, up to 32GB
	插槽 Slot	1 x DDR4 260-pin SO-DIMM slot
存储 Storage	SATA	1 x SATA3.0 port
	M.2	1 x M.2-2242 M Key SSD slot(SATA3.0)
图形 Graphic	控制器 Controller	Intel® UHD graphics integrated
音频 Audio	编码器 Codec	Realtek ALC897 codec
外部接口 Rear I/O	显示 Display	1 x DP1.4, resolution up to 4096x2160@60Hz 1 x HDMI, resolution to 3840x2160@30Hz
	网络 Ethernet	2 x GbE(RJ45), Realtek 8111H controller
	USB	2 x USB3.0(5Gbps), 2 x USB2.0(480Mbps)
	开关按钮 Button	1 x Power Button(White for power on, Blink for sleep mode, Off for power off)
	指示灯 Indicators	1 x SATA LED(Red), 1 x Power LED(Green)
内部接口 Internal I/O	显示 Display	1 x LVDS, dual channel 18/24bit, resolution up to 1920x1200@60Hz 1 x eDP1.3, resolution up to 4096x2160@60Hz(share connector with LVDS)
	音频 Audio	1 x Audio wafer(Mic-in/Line-out, 2*5pin)
	USB	2 x USB2.0 wafer(1*4pin)
	串口 Serial Port	1 x RS232/485 wafer(2*5pin), 1 x RS232 wafer(2*5pin), 4 x TTL wafer(2*4pin)
	风扇 Fan	1 x Smart Fan wafer(1*4pin)
	SMBus	1 x SMBus wafer(1*4pin)
	eSPI	1 x eSPI header for debug
	其他 Others	1 x Front panel wafer(2*5pin)(Power LED, HDD LED, Power button, Reset button)
扩展接口 Expansion Slots	M.2 slot	1 x M.2-2230 E key slot for wifi module (PCIe/USB2.0)
	Mini-PCIe slot	1 x Mini-PCIe slot with Nano-SIM socket (PCIe/USB2.0)
安全 Security	TPM	fTPM2.0 supported
看门狗定时器 Watchdog Timer	输出&间隔 Output&Interval	System reset, programmable from 1~255 seconds
电源 Power	类型 Type	12~24V DC input, +/-10% tolerance
	接口 Interface	1 x 2-pin phoenix terminal block
	功耗 Power Consumption	16.3W(idle mode), 17.5W(Typical mode)
操作系统 O.S Support	MS Windows	Windows10/11
	Linux	Linux
机械参数 Mechanism	尺寸 Dimensions	(L)146mm x (W)102mm
	净重 Gross Weight	0.8kg
	环境 Environment	温度 Temperature
	湿度 Humidity	5~95% (Non-condensing)
	振动 Vibration	5~500Hz, 3Grms operating

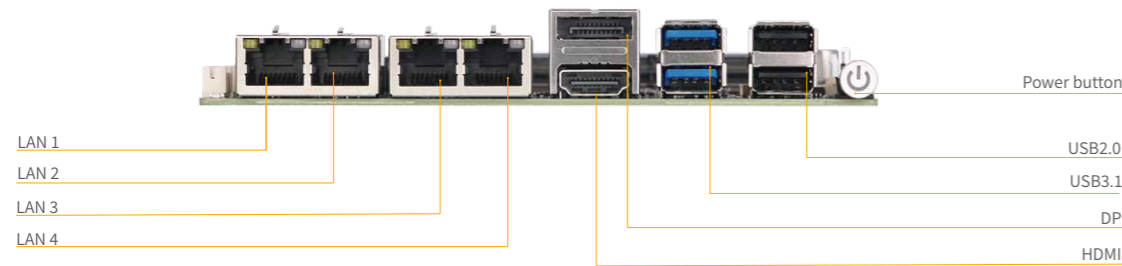
NK-6172

Intel® Celeron® J6412 processor, Quad-core, base frequency 2.0GHz up to 2.6 GHz, TDP 10W

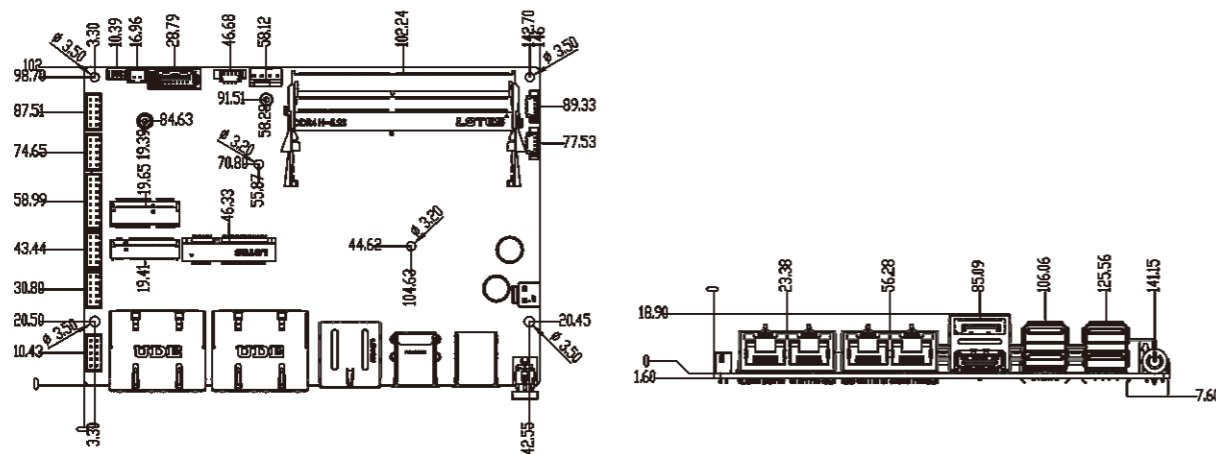
内部接口 Internal I/O



外部接口 Rear I/O



产品尺寸图 (Unit:mm)



产品特点 Feature

- Intel® Celeron® J6412 processor, Quad-core, base frequency 2.0GHz up to 2.6 GHz, TDP 10W
- Support 2 x DDR4-3200MHz SO-DIMM slot, up to 32GB
- Support DP, HDMI, Dual-display
- 2 x Giga-bit Ethernet
- 2 x USB3.0 ports, 4 x USB2.0 ports
- 1 x RS232/485, 1 x RS232, 4 x TTL
- 1 x M.2-2242, 1 x M.2-2230 and 1 x Mini-PCle slot with nano-SIM card socket
- 12~24V power input, lockable DC-IN phoenix terminal block

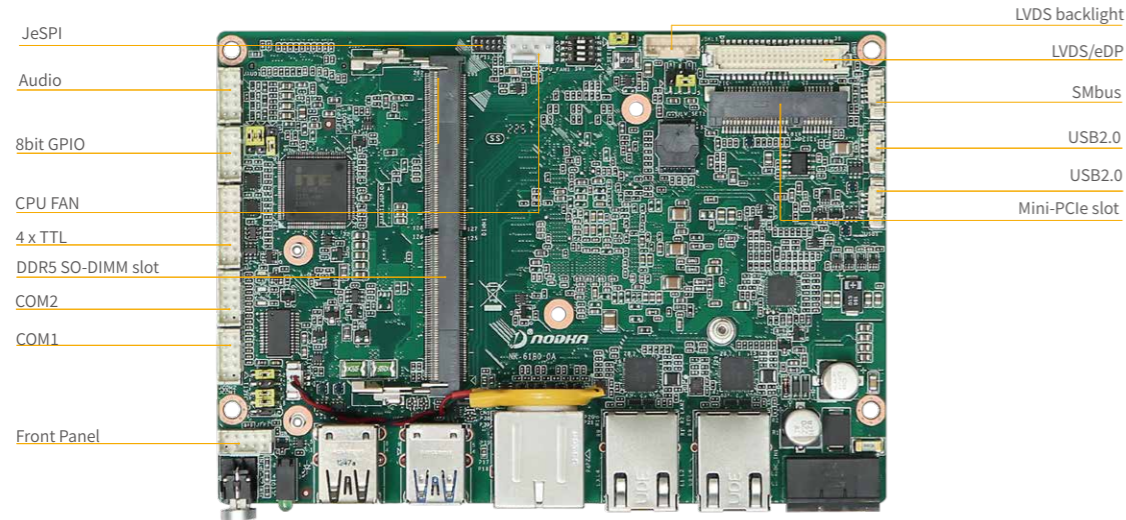
规格 Specification

产品型号		NK-6172
处理器 Processor System	CPU	Intel® Celeron® J6412 processor (2.0GHz, up to 2.6GHz)
	芯片组 Chipset	Intel® SoC integrated
	BIOS	AMI 128Mb UEFI BIOS
内存 Memory	技术 Technology	Dual Channel(Non-ECC) DDR4 3200MHz, up to 32GB
	插槽 Slot	2 x DDR4 260-pin SO-DIMM slot
存储 Storage	SATA	1 x SATA3.0 port
	M.2	1 x M.2-2242 M Key SSD slot (SATA3.0)
图形 Graphic	控制器 Controller	Intel® UHD graphics integrated
音频 Audio	编码器 Codec	Realtek ALC897 codec
外部接口 Rear I/O	显示 Display	1 x DP1.4, resolution up to 4096x2160@60Hz 1 x HDMI, resolution to 4096x2160@30Hz
	网络 Ethernet	4 x GbE(RJ45), Intel i210AT colay i211AT controller
	USB	2 x USB3.0(5Gbps), 2 x USB2.0(480bps)
	开关按钮 Button	1 x Power Button(White for power on,Blink for sleep mode,Wff for power off)
	指示灯 Indicators	1 x SATA LED(Red), 1 x Power LED(Green)
内部接口 Internal I/O	USB	2 x USB2.0 wafer(1*4pin)
	串口 Serial Port	1 x RS232/485 wafer(2*5pin), 1 x RS232 wafer(2*5pin), 4 x TTL wafer(2*4pin)
	音频 Audio	1 x Audio wafer(Mic-in/Line-out, 2*5pin)
	风扇 Fan	1 x Smart Fan wafer(1*4pin)
	GPIO	1 x 8bit GPIO(2*5pin)
	SMBus	1 x SMBus wafer(1*4pin)
	eSPI	1 x eSPI header for debug
	其他 Others	1 x Front panel wafer(2*5pin)(Power LED, HDD LED, Power button, Reset button)
扩展接口 Expansion Slots	M.2 slot	1 x M.2-2230 E key slot for wifi module (PCIe/USB2.0)
	Mini-PCle slot	1 x Mini-PCle slot with Nano-SIM socket(PCIe/USB2.0)
安全 Security	TPM	fTPM2.0 supported
看门狗定时器 Watchdog Timer	输出&间隔 Output&Interval	System reset, programmable from 1~255 seconds
电源 Power	类型 Type	12~24V DC input, +/-10% tolerance
	接口 Interface	1 x 2-pin phoenix terminal block
	功耗 Power Consumption	16.3(Idle mode), 17.5(Typical mode)
操作系统 O.S Support	MS Windows	Windows10/11
	Linux	Linux
机械参数 Mechanism	尺寸 Dimensions	(L)146mm x (W)102mm
	净重 Gross Weight	0.8kg
环境 Environment	温度 Temperature	Operating:-10°C~60°C with SSD Storage: -40°C~85°C
	湿度 Humidity	5~95% (Non-condensing)
	振动 Vibration	5~500Hz, 3Grms operating

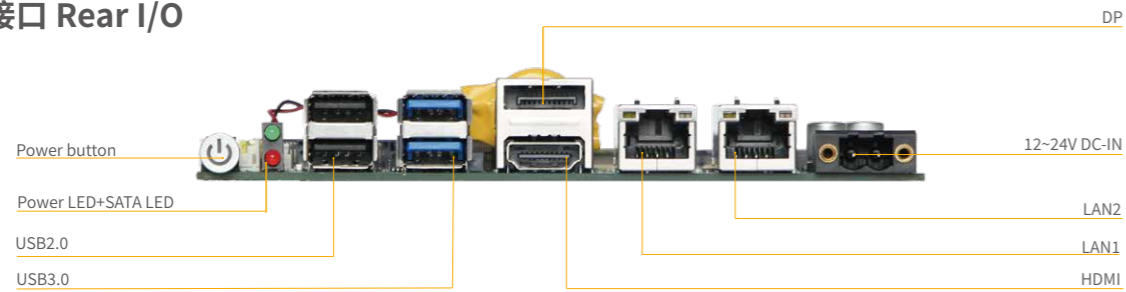
NK-6180

Intel® Core™ i3-N305 processor, Quad-core, base frequency 2.0GHz up to 3.8GHz, TDP 15W

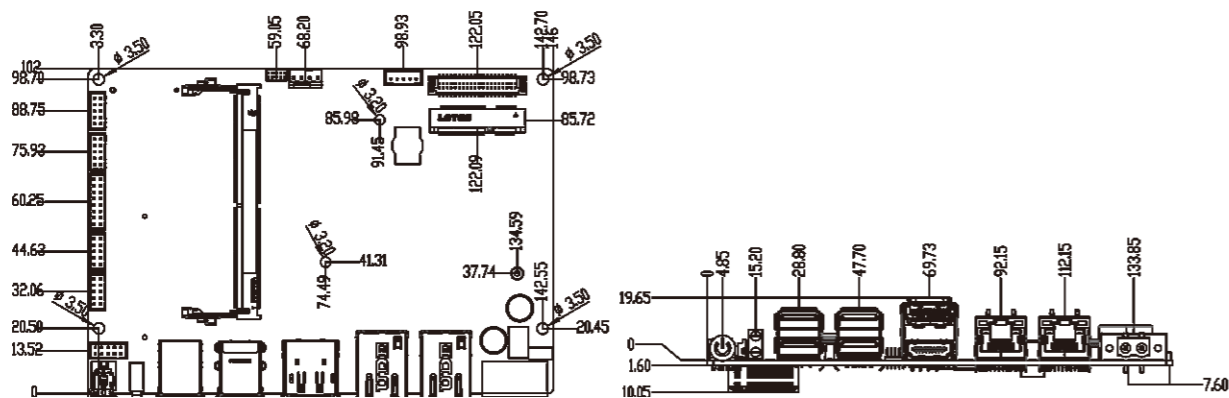
内部接口 Internal I/O



外部接口 Rear I/O



产品尺寸图(Unit:mm)

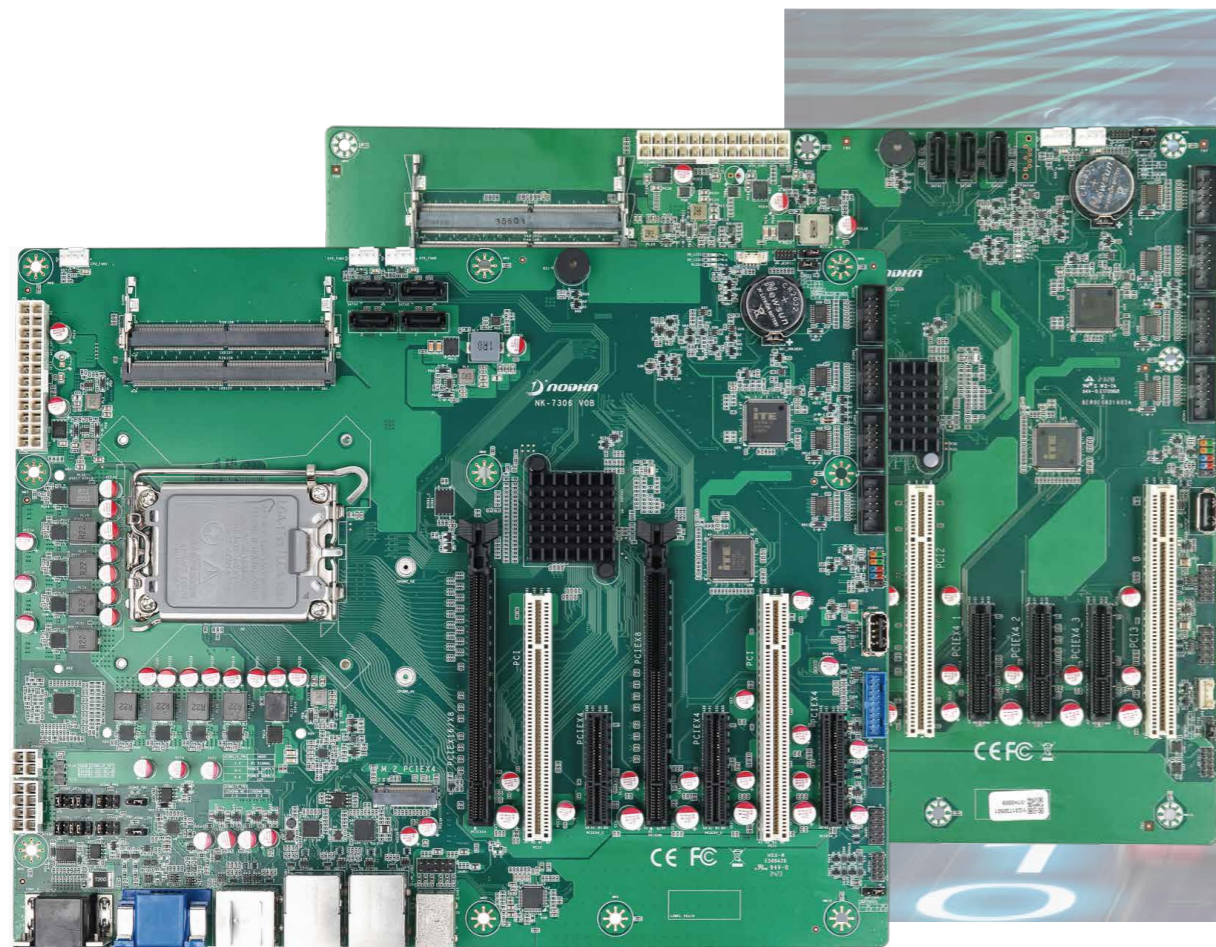


产品特点Feature

- Intel® Core™ i3-N305 processor, Quad-core, base frequency 2.0GHz up to 3.8GHz, TDP 15W
- Support 1 x DDR5-4800MHz SO-DIMM slot, up to 16GB
- Support DP, HDMI, LVDS/eDP Tri-display
- 2 x Giga-bit Ethernet
- 2 x USB3.2 ports, 4 x USB2.0 ports
- 1 x RS232/485, 1 x RS232, 4 x TTL
- 1 x M.2-2242/2280 and 1 x Mini-PCIe slot with nano-SIM card socket
- 12~24V power input, lockable DC-IN phoenix terminal block

规格 Specification

产品型号	NK-6180	
处理器 Processor System	CPU	Intel® Core™ i3-N305 processor GHz, up to 3.8GHz,TDP 15W
	芯片组 Chipset	Intel® SoC integrated
	BIOS	AMI 256Mb UEFI BIOS
内存 Memory	技术 Technology	Single Channel(Non-ECC) DDR5-4800MHz, up to 16GB
	插槽 Slot	1 x DDR5 262-pin SO-DIMM slot
存储 Storage	M.2	1 x M.2-2242/2280 M Key SSD slot(PCIe4.0)
图形 Graphic	控制器 Controller	Intel® UHD graphics integrated
音频 Audio	编码器 Codec	Realtek ALC897 codec
外部接口 Rear I/O	显示 Display	1 x DP1.4, resolution up to 4096x2160@60Hz 1 x HDMI, resolution to 4096 x 2160@30Hz
	网络 Ethernet	2 x GbE(RJ45), Intel i225-V Colay i226-V controller
	USB	2 x USB3.2(10Gbps), 2 x USB2.0(480Mbps)
	开关按钮 Button	1 x Power Button(White for power on,Blink for sleep mode,Off for power off)
	指示灯 Indicators	1 x SATA LED(Red), 1 x Power LED(Green)
内部接口 Internal I/O	显示 Display	1 x LVDS, dual channel 18/24bit, resolution up to 1920x1200@60Hz 1 x eDP1.3, resolution up to 4096x2160@60Hz(share connector with LVDS)
	音频 Audio	1 x Audio wafer(Mic-in/Line-out, 2*5pin)
	USB	2 x USB2.0 wafer(1*4pin)
	串口 Serial Port	1 x RS232/RS485 wafer(2*5pin), 1 x RS232 wafer(2*5pin), 4 x TTL wafer(2*4pin)
	风扇 Fan	1 x Smart Fan wafer(1*4pin)
	SMBus	1 x SMBus wafer(1*4pin)
	GPIO	1 x 8bit GPIO wafer(2*5pin)
	eSPI	1 x eSPI header for debug
其他 Others	1 x Front panel wafer(2*5pin)(Power LED, HDD LED, Power button, Reset button)	
扩展接口 Expansion Slots	Mini-PCIe slot	1 x Mini-PCIe slot with Nano-SIM socket(PCIe/USB2.0)
安全 Security	TPM	fTPM2.0
看门狗定时器 Watchdog Timer	输出&间隔 Output&Interval	System reset, programmable from 1~255 seconds
电源 Power	类型 Type	12~24V DC input, +/-10% tolerance
	接口 Interface	1 x 2-pin phoenix terminal block
	功耗 Power Consumption	TBD
操作系统 O.S Support	MS Windows	Windows10/11
	Linux	Linux
机械参数 Mechanism	尺寸 Dimensions	(L)146mm x (W)102mm
	净重 Gross Weight	0.8kg
	温度 Temperature	Operating:-10°C~60°C with SSD Storage:-40°C~85°C
环境 Environment	湿度 Humidity	5~95% (Non-condensing)
	振动 Vibration	5~500Hz, 3Grms operating



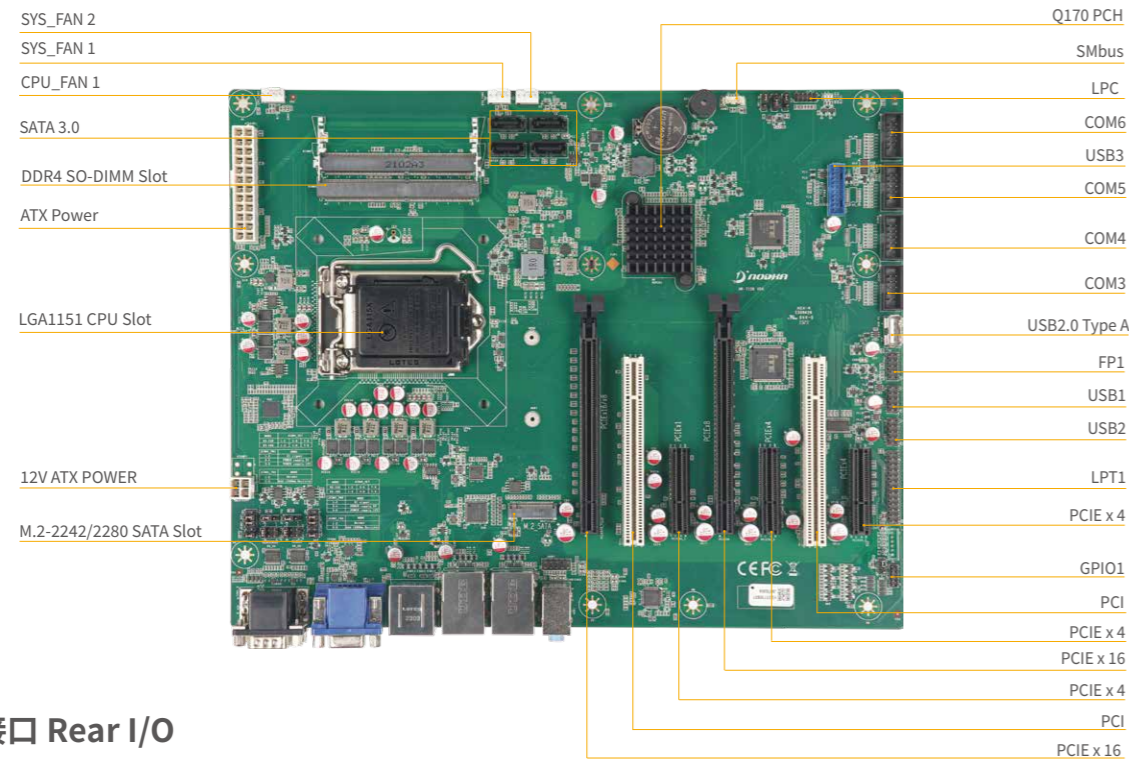
ATX/Micro-ATX 工业主板

ATX/Micro-ATX工业大主板搭载桌面级处理器, 具备丰富的I/O接口和灵活的扩展性, 支持不同算力的平台选择, 满足客户多样化应用需求。

NK-7106

Intel® 6/7/8/9th Generation Celeron/Pentium/Core-I series LGA 1151 processor, TDP 95W

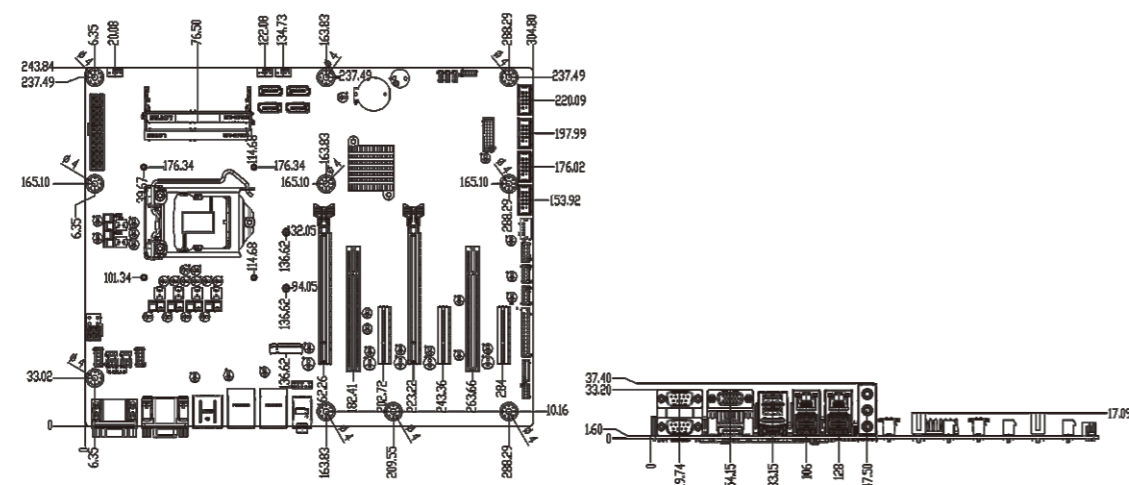
内部接口 Internal I/O



外部接口 Rear I/O



产品尺寸图 (Unit:mm)



产品特点 Feature

- Intel® 6/7/8/9th Generation Celeron/Pentium/Core-I series LGA 1151 processor, TDP up to 95W
- Support dual channel(Non-ECC) DDR4-1866/2133MHz SO-DIMM slot , up to 64GB
- Support VGA, HDMI, DP Tri-display
- 2 x Giga-bit Ethernet,
- 8x USB3.0 ports, 5 x USB2.0 ports
- 1 x RS232/RS485, 5 x RS232
- 4x SATA3.0 support software RAID 0,1,5,10, 1x SATA M.2-2242/2280 Slot
- 2x PCIeX16(1x 16 or 2x 8 link), 2x PCIeX4, 1x PCIeX4(x1link), 2x PCI slots

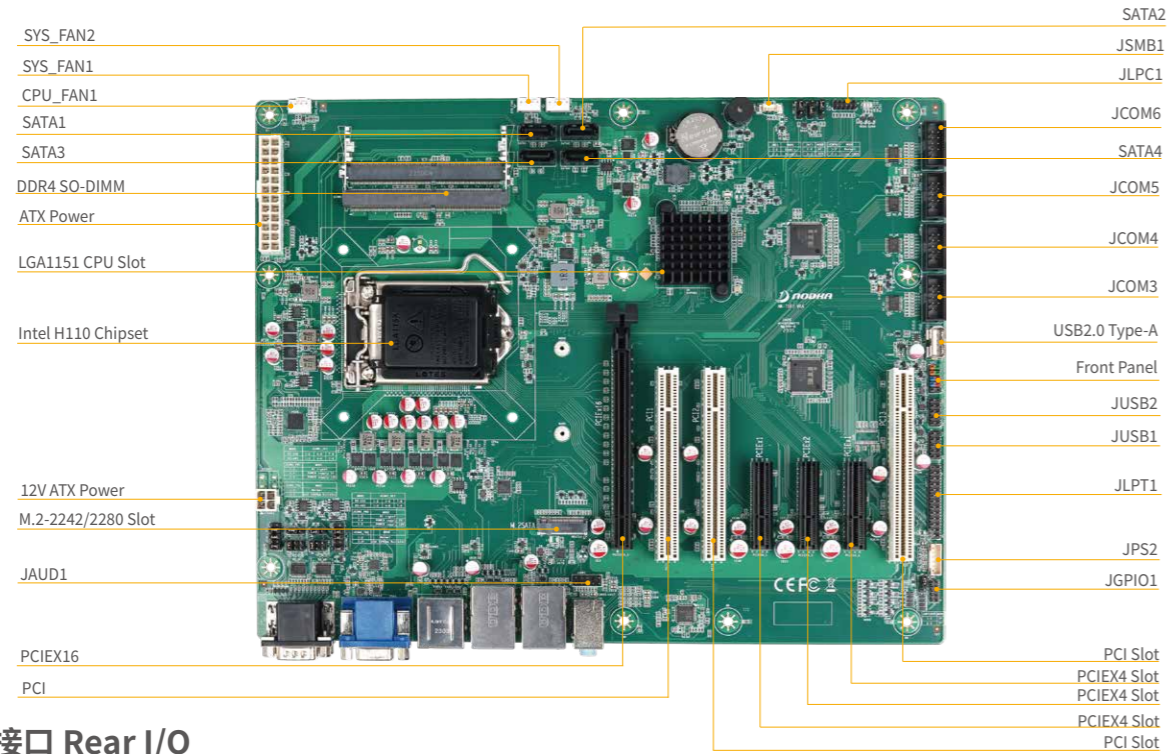
规格 Specification

产品型号		NK-7106
处理器 Processor System	CPU	Intel® 6/7/8/9th generation Celeron/Pentium/Core-I series processor, TDP up to 95W
	插槽 Socket	LGA1151
	芯片组 Chipset	Intel Q170/C236
	BIOS	AMI 128Mb UEFI BIOS
内存 Memory	技术 Technology	Dual Channel(Non-ECC) DDR4 1866/2133MHz, up to 32GB
	插槽 Slots	2 x DDR4 260-pin SO-DIMM slots
存储 Storage	M.2	1 x M.2-2242/2280 Key M slot (SATA3.0 Signal)
	SATA	4 x SATA3.0 (up to 6Gb/s), support raid 0/1/5/10
图形 Graphics	控制器 Controller	Intel HD graphics integrated
音频 Audio	编解码器 Codec	Realtek ALC 897 codec
外部接口 Rear I/O	显示 Display	1 x VGA, resolution up to 1920x1200@60Hz 1 x DP, resolution up to 4096x2160@60Hz 1 x HDMI, resolution up to 4096 x 2160@30Hz
	网络 Ethernet	2 x GbE(RJ45), LAN1: Intel i219-V, LAN2: Intel I210AT
	USB	6 x USB3.0(5Gpbs)
	串口 Serial	1 x RS232/485(DB9), 1 x RS232
内部接口 Internal I/O	音频 Audio	1 x Line-out, 1 x Mic-in, 1 x Line-in
	USB	2 x USB3.0 wafer (1 x 2*5pin) , 4 x USB2.0 Wafer, (2 x 2*5pin) , 1 x vertical USB2.0 type-A connect
	串口 Serial	4 x RS232 wafer
	PS/2	1 x PS/2 wafer
	LPT	1 x LPT header
	LPC	1 x LPC header
	SMBus	1 x SMBus wafer
	GPIO	1 x 8bit GPIO
	FP	1 x FP(Power LED, HDD LED, Power button, Reset button)
	FAN	2 x System FAN /1 x CPU FAN
扩展槽 Expansion Slots	PCIe X 16	2 x PCIeX16(Gen3) slots (1 x 16 or 2 x 8 link (default))
	PCIe X 4	2 x PCIeX4(Gen3) slots, 1 x PCIeX4(Gen3, x 1 link) slot
	PCI	2 x PCI slots
看门狗定时器 Watchdog Timer	输出 & 间隔 Output & Interval	System reset, programmable from 1~255 sec
安全 Security	TPM	fTPM2.0
电源 Power	类型 Type	ATX Power Input:24-Pin ATX + 4/8-Pin ATX 12V
	功耗Consumption	TBD
操作系统 OS Support	Microsoft Windows	Windows 7/8.1(Only support with Intel 6th Gen. CPU), Windows 10
	Linux	Linux
机械参数 Mechanism	尺寸 Dimensions	(L)305mm x (W)244mm
	净重 Gross Weight	TBD
环境 Environment	工作温度 Operating	0°C ~ 60°C
	存储温度 Storage	-40°C ~ 85°C
	相对湿度 Humidity	5~95% (Non-condensing)

NK-7107

Intel® 6/7/8/9th Generation Celeron/Pentium/Core-I series LGA 1151 processor, TDP 95W

内部接口 Internal I/O



外部接口 Rear I/O



产品尺寸图(Unit:mm)

产品特点Feature

- Intel® 6/7/8/9th Generation Celeron/Pentium/Core-I series LGA 1151 processor, TDP up to 95W
- Support dual channel(Non-ECC) DDR4-1866/2133/2400/2666MHz SO-DIMM slot up to 64GB
- Support VGA, HDMI, DP dual display
- 2 x Giga-bit Ethernet,
- 4x USB3.0 ports, 6 x USB2.0 ports
- 1 x RS232/485, 5 x RS232
- 3x SATA3.0, 1x SATA M.2-2242/2280 Slot
- 1x PCIeX16, 1x PCIeX4(x2link), 2x PCIeX4(x1link), 3x PCI slots

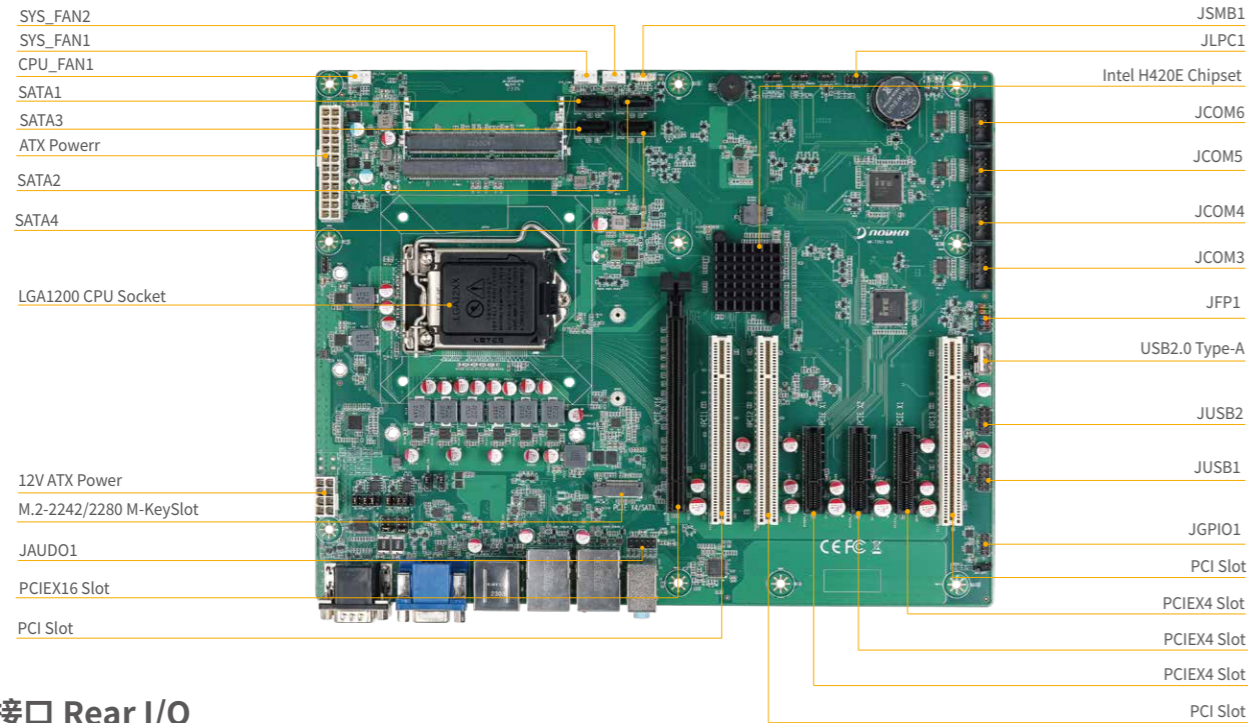
规格 Specification

产品型号		NK-7107
处理器 Processor System	CPU	Intel® 6/7/8/9th generation Celeron/Pentium/Core-I series processor, TDP up to 95W
	插槽 Socket	LGA1151
	芯片组 Chipset	Intel H110
	BIOS	AMI 128Mb UEFI BIOS
内存 Memory	技术 Technology	Dual Channel(Non-ECC) DDR4-1866/2133/2400/2666MHz, up to 64GB
	插槽 Slots	2 x DDR4 260-pin SO-DIMM slots
存储 Storage	M.2	1 x M.2-2242/2280 Key M slot (SATA3.0 Signal) (BOM Optional share signal with SATA3.0 default M.2-2242/2280)
	SATA	4 x SATA3.0 (up to 6Gb/s, 1 x SATA3.0 (optional))
图形 Graphics	控制器 Controller	Intel HD graphics integrated
音频 Audio	编解码器 Codec	Realtek ALC 897 codec
外部接口 Rear I/O	显示 Display	1 x VGA, resolution up to 1920x1200@60Hz 1 x DP, resolution up to 4096x2160@60Hz 1 x HDMI, resolution up to 4096 x 2160@30Hz
	网络 Ethernet	2 x GbE(RJ45), LAN1: Intel i219-V, LAN2: Realtek 8111H controller
	USB	4 x USB3.0(5Gbps), 2 x USB2.0(480Mbps)
	串口 Serial	2 x RS232/485
	音频 Audio	1 x Line-out, 1 x Mic-in, 1 x Line-in
内部接口 Internal I/O	USB	4 x USB2.0 pin header (2 x 2*5pin), 1 x Vertical USB2.0 type-A connector (BOM option share signal with 1*USB2.0 header)
	串口 Serial	4 x RS232 wafer
	PS/2	1 x PS/2 wafer
	LPT	1 x LPT header
	LPC	1 x LPC header
	SMbus	1 x SMbus wafer
	GPIO	1 x 8bit GPIO
	FAN	2 x System FAN / 1 x CPU FAN
	FP	1 x FP(Power LED, HDD LED, Power button, Reset button)
	扩展槽 Expansion Slots	1 x PCIeX16(Gen3) slots 2 x PCIeX4(Gen2, x 1 link) slots, 1 x PCIeX4(Gen2, x 2 link) slot 3 x PCI slots
看门狗定时器 Watchdog Timer	输出 & 间隔 Output & Interval	System reset, programmable from 1~255 sec
安全 Security	TPM	fTPM2.0
电源 Power	类型 Type	ATX Power Input: 24-Pin ATX + 4/8-Pin ATX 12V
	功耗 Consumption	TBD
操作系统 OS Support	Microsoft Windows	Windows 7/8.1(Only support with Intel 6th Gen. CPU), Windows 10
	Linux	Linux
机械参数 Mechanism	尺寸 Dimensions	(L)305mm x (W)244mm
	净重 Gross Weight	TBD
	工作温度 Operating	0°C ~ 60°C
环境 Environment	存储温度 Storage	-40°C ~ 85°C
	相对湿度 Humidity	5~95% (Non-condensing)

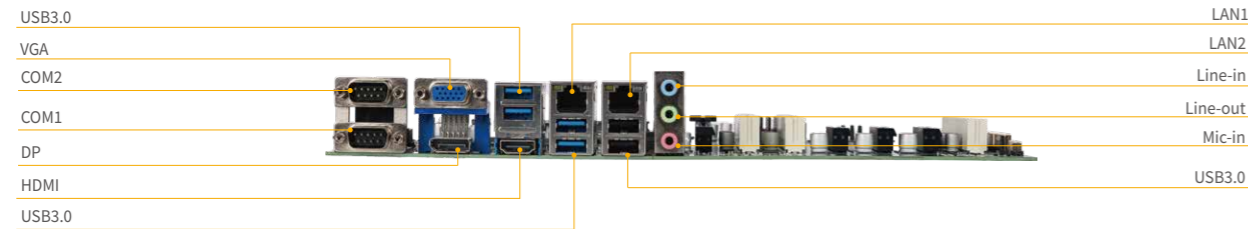
NK-7205

Intel® 10/11th Generation Celeron/Pentium/Core-I series processor, TDP 125W

内部接口 Internal I/O



外部接口 Rear I/O



产品尺寸图(Unit:mm)

产品特点Feature

- Intel® 10/11th Generation Celeron/Pentium/Core-I series processor, TDP up to 125W
- Support dual channel(Non-ECC) DDR4-2933/3200MHz SO-DIMM slot up to 64GB
- Support VGA,HDMI,DP Tri-Display
- 2 x Giga-bit Ethernet
- 6 x USB3.0 ports, 4 x USB2.0 ports
- 1 x RS232/RS485, 5 x RS232
- 3 x SATA3.0, 1 x SATA M.2-2242/2280 Slot
- 1 x PCIe X 16, 1 x PCIe X 4(x2link), 2 x PCIeX4(x1link), 3 x PCI slots

规格 Specification

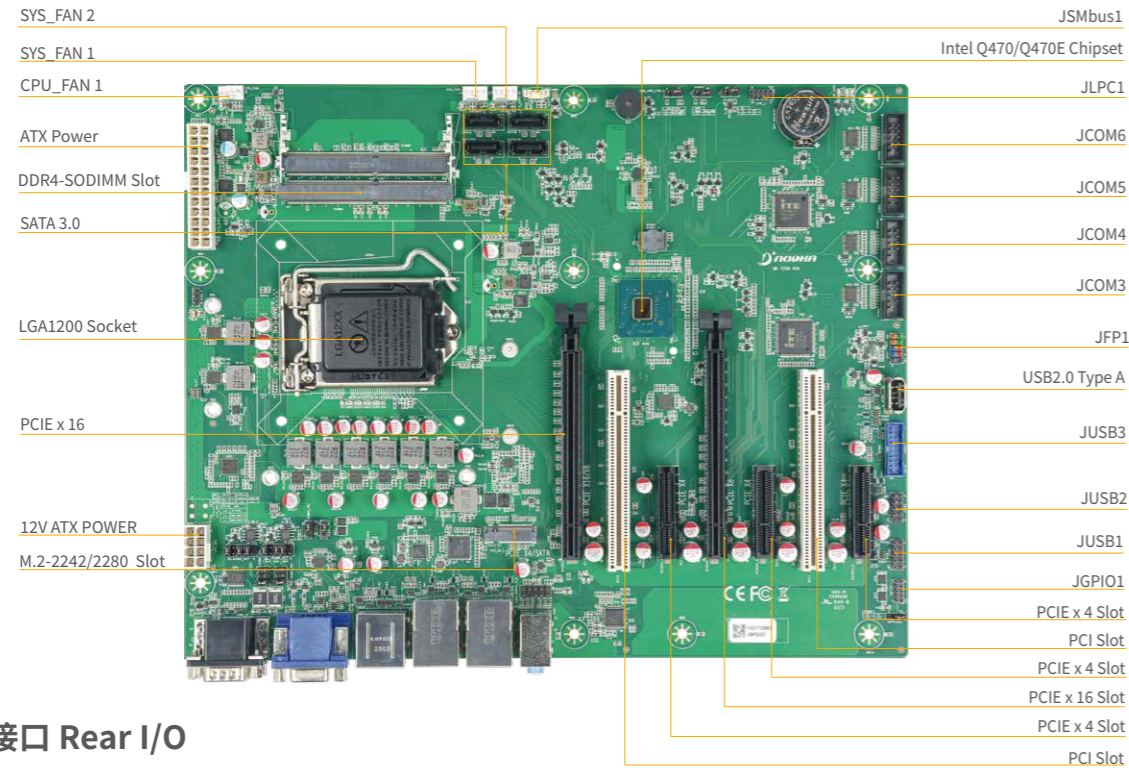
产品型号		NK-7205
处理器 Processor System	CPU	Intel® 10/11th Generation Celeron/Pentium/Core-I series processor, TDP up to 125W
	插槽 Socket	LGA1200
	芯片组 Chipset	Intel H420E
	BIOS	AMI 256Mb UEFI BIOS
内存 Memory	技术 Technology	Dual Channel(Non-ECC) DDR4-2933/3200MHz, up to 64GB
	插槽 Slots	2 x 260-pin SO-DIMM slots
存储 Storage	M.2 SSD	1 x M.2-2242/2280 Key M slot ¹ (SATA3.0 /PCIe 4.0 Signal) (BOM Optional share signal with 1*SATA3.0 ,default M.2-2242/2280)
	SATA	4 x SATA3.0 (up to 6Gb/s, 1 x SATA3.0 (optional))
图形 Graphics	控制器 Controller	Intel HD graphics integrated
音频 Audio	编解码器 Codec	Realtek ALC897 codec
外部接口 Rear I/O	显示 Display	1 x VGA, resolution up to 1920x1200@60Hz 1 x DP, resolution up to 4096x2160@60Hz 1 x HDMI, resolution up to 4096 x 2160@30Hz
	网络 Ethernet	2 x GbE(RJ45) LAN1: Intel i219-V ,LAN2: Realtek 8111H controller
	音频 Audio	1 x Line-out, 1 x Mic-in, 1 x Line-in
	USB	6 x USB3.0 (5Gbps)
	串口 Serial	2 x RS232/485(DB9), 1 x RS232
内部接口 Internal I/O	USB	4 x USB2.0 header, 1 x vertical USB2.0 type-A connect (BOM Optional share signal with 1*USB2.0 header,define type-A)
	COM	4 x RS232 header
	LPC	1 x LPC header for debug
	FAN	1 x CPU Fan / 2 xSYS Fan
	GPIO	1 x 8bit GPIO
	SMBus	1 x SMBus wafer
扩展槽 Expansion Slots	PCIe X16	1 x PCIeX16(Gen3) slot
	PCIe X4	2 x PCIeX4(Gen3, x1 link) slots,1 x PCIeX4(Gen3, x2 link) slot
	PCI	3 x PCI slots
看门狗定时器 Watchdog Timer	输出 & 间隔Output & Interval	System reset, programmable from 1~255 sec
安全 Security	TPM	fTPM2.0
电源 Power	类型 Type	ATX Power Input: 24-Pin ATX + 8/12-Pin ATX 12V
	功耗Consumption	TBD
操作系统 OS Support	Microsoft Windows	Windows 10 /11
	Linux	Linux
机械参数 Mechanism	尺寸 Dimensions	(L)305mm x(W) 244mm
	净重 Gross Weight	TBD
	工作温度 Operating	0°C ~ 60°C
环境 Environment	存储温度 Storage	-40°C ~ 85°C
	相对湿度 Humidity	5~95% (Non-condensing)

¹SATA signal share with SATA port0, PCIe4 signal only support with 11th Gen. processors

NK-7208

Intel® 10/11th Generation Celeron/Pentium/Core-I series processor, TDP 125W

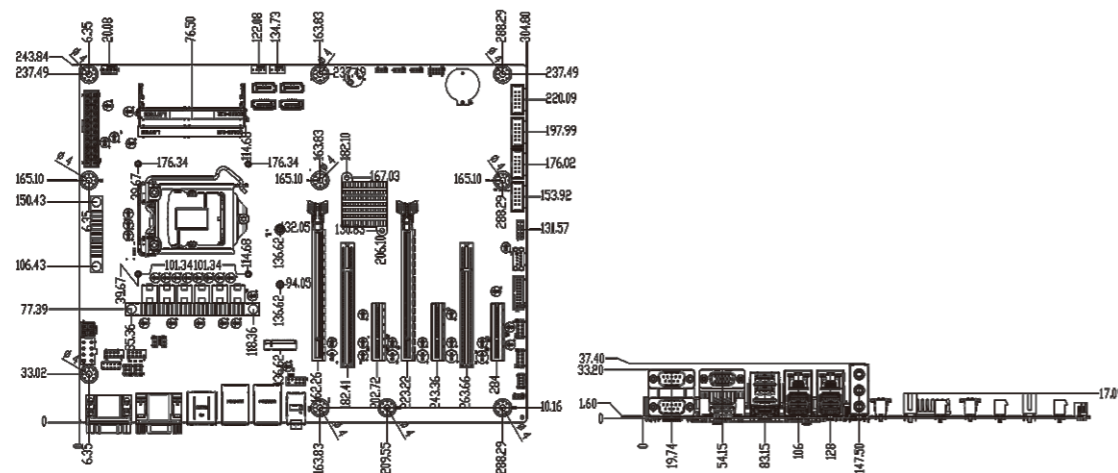
内部接口 Internal I/O



外部接口 Rear I/O



产品尺寸图(Unit:mm)



产品特点Feature

- Intel® 10/11th Generation Celeron/Pentium/Core-I series processor, TDP up to 125W
- Support dual channel(Non-ECC) DDR4-2933/3200MHz SO-DIMM slot , up to 64GB
- Support VGA,HDML,DP Tri-Display
- 2 x Giga-bit Ethernet,
- 8 x USB3.0 ports, 5 x USB2.0 ports
- 1 x RS232/RS485, 5 x RS232
- 4 x SATA3.0 support software RAID 0,1,5,10, 1 x M.2-2242/2280 SATA/NVME(11th Gen. processors) Slot
- 2 x PCIE16(1x 16 or 2x 8 link), 3x PCIE X 4, 2 x PCI slots

规格 Specification

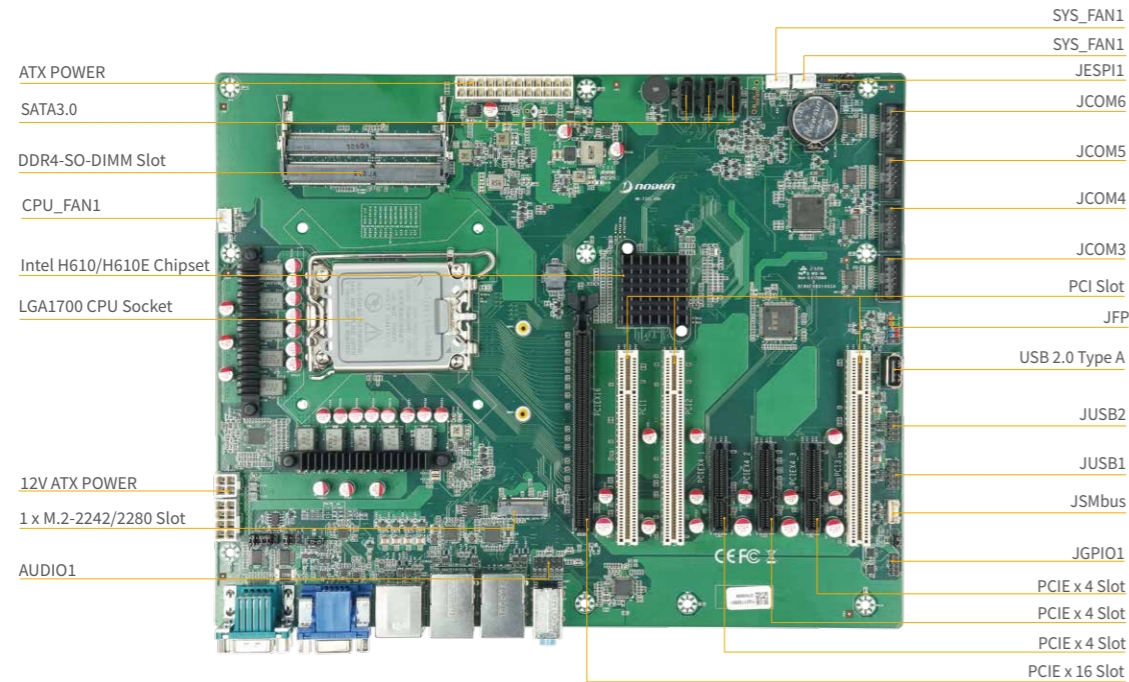
产品型号		NK-7208
处理器 Processor System	CPU	Intel® 10/11th Generation Celeron/Pentium/Core-I series processor, TDP up to 125W
	插槽 Socket	LGA1200
	芯片组 Chipset	Intel Q470/Q470E
	BIOS	AMI 256Mb UEFI BIOS
内存 Memory	技术 Technology	Dual Channel(Non-ECC) DDR4-2933/3200MHz, up to 64GB
	插槽 Slots	2 x 260-pin SO-DIMM slots
存储 Storage	SATA	4 x SATA3.0 (up to 6Gb/s) support RAID 0/1/5/10
	M.2 SSD	1 x M.2-2242/2280 Key M slot ^[1] (SATA3.0/PCIE4.0 X4 Signal)
图形 Graphic	控制器 Controller	Intel HD graphics integrated
音频 Audio	编解码器 Codec	Realtek ALC 897 codec
外部接口 Rear I/O	显示 Display	1 x VGA, resolution up to 1920x1200@60Hz 1 x DP++, resolution up to 4096x2160@60Hz 1 x HDMI, resolution up to 4096 x 2160@30Hz
	网络 Ethernet	2 x GbE(RJ45) LAN1: Intel i219-V; LAN 2: Intel i210AT
	音频 Audio	1 x Line-out, 1 x Mic-in, 1 x Line-in
	USB	6 x USB3.0(5Gbps)
	串口 Serial	2 x RS485/232
内部接口 Internal I/O	FP	1 x FP(Power LED, HDD LED, Power button, Reset button)
	COM	4 x RS232 wafer
	USB	2x USB3.0 pin header (1x 2*5pin), 4x USB2.0 pin header, (2 x 2*5pin), 1 x vertical USB2.0 type-A
	eSPI	1 x LPC header for debug
	FAN	1 x CPU Fan / 2 x SYS Fan
	GPIO	1 x 8bit GPIO(optional)
	SMbus	1 x SMbus wafer
扩展接口 Expansion Slots	PCle X16	2 x PCleX16(Gen3) slots (1 x 16 or 2 x 8 link)
	PCle X4	3 x PCleX4(Gen3) slots
	PCI	2 x PCI slots
看门狗定时器 Watchdog Timer	输出 & 间隔Output & Interval	System reset, programmable from 1~255 sec
安全 Security	TPM	fTPM2.0
电源 Power	类型 Type	ATX Power Input:24-Pin ATX + 8/12-Pin ATX 12V
	功耗Consumption	TBD
操作系统 O.S Support	Microsoft Windows	Windows 10 /11
	Linux	Linux
机械参数 Mechanism	尺寸 Dimensions	(L)305mm x(W) 244mm
	净重 Gross Weight	TBD
环境 Environment	工作温度 Operating	0°C ~ 60°C
	存储温度 Storage	-40°C ~ 85°C
	相对湿度 Humidity	5-95% (Non-condensing)

[1]:SATA signal share with SATA port0, PCleX4 signal only support with 11th Gen. processors

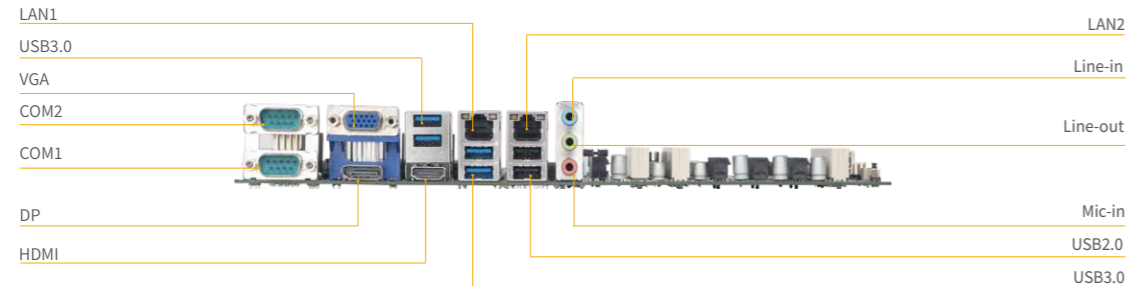
NK-7305

Intel® 12/13th Generation Celeron/Pentium/Core-I series LGA1700 processor,TDP 125W

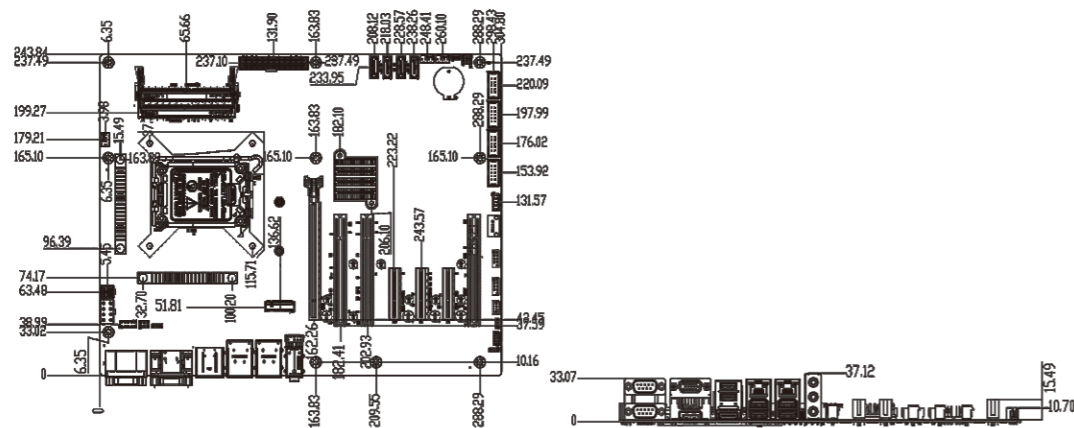
内部接口 Internal I/O



外部接口 Rear I/O



产品尺寸图(Unit:mm)



产品特点Feature

- Intel® 12/13th Generation Celeron/Pentium/Core-I series LGA1700 processor,TDP up to 125W
- Support Dual Channel(Non-ECC) DDR4-3200MHz SO-DIMM slot, up to 64GB
- Support VGA,HDMI,DP Tri-display
- 2 x Giga-bit Ethernet
- 4 x USB3.0 ports, 6 x USB2.0 ports
- 1 x RS232/485, 5 x RS232
- 1 x PCIe4.0 X 16 (GEN 4), 1 x PCIe X4(Gen4) , 2 x PCIe X4(Gen4, X1 link), 3 X PCI

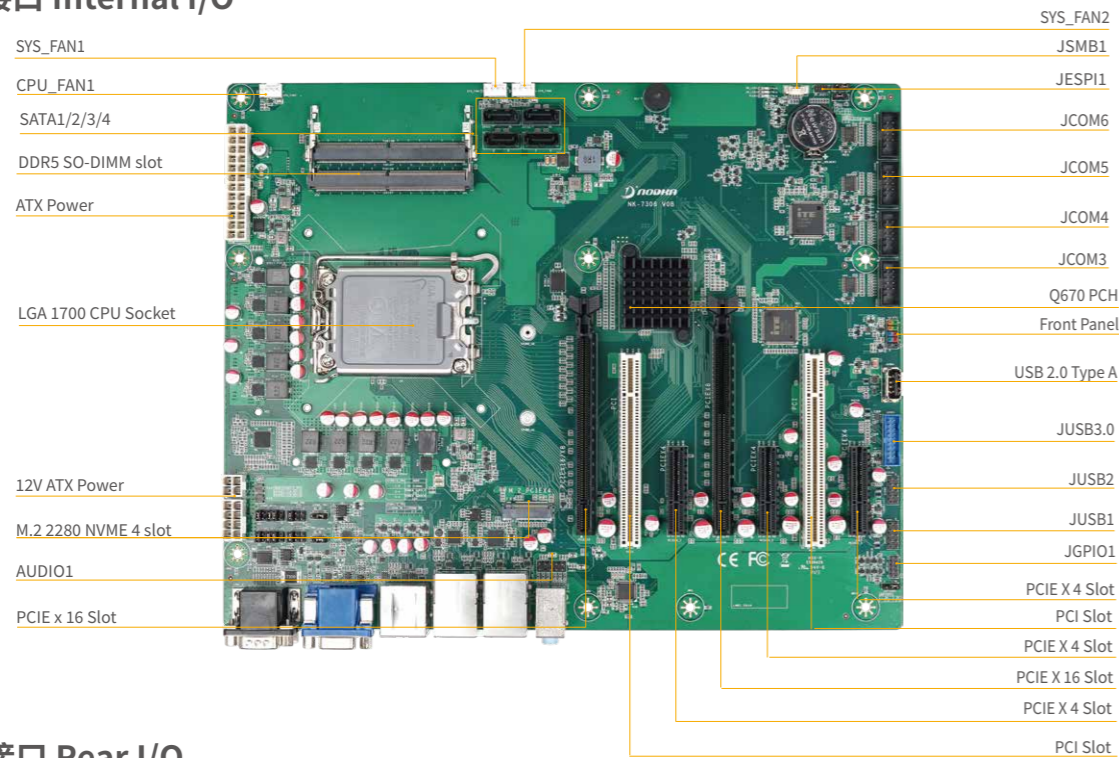
规格 Specification

产品型号		NK-7305
处理器 Processor System	CPU	Intel® 12/13th Generation Celeron/Pentium/Core-I series processor, TDP up to 125W
	插槽 Socket	LGA1700
	芯片组 Chipset	Intel H610/H610E
	BIOS	AMI 256Mb UEFI BIOS
内存 Memory	技术 Technology	Dual Channel(Non-ECC) DDR4 3200MHz, up to 64GB
	插槽 Slot	2 x 260-pin SO-DIMM slots
存储 Storage	SATA	4 x SATA3.0 (up to 6Gb/s, 1 x SATA3.0 (optional))
	M.2	1 x M.2-2242/2280 Key M slot (BOM Optional share signal with 1*SATA3.0 ,default M.2-2242/2280)
图形 Graphic	控制器 Controller	Intel HD graphics integrated
外部接口 Rear I/O	显示 Display	1 x VGA, resolution up to 1920x1200@60Hz 1 x DP, resolution up to 4096x2160@60Hz 1 x HDMI, resolution up to 4096 x 2160@30Hz
	网络 Ethernet	2 x GbE(RJ45) LAN1 :Intel i219-V ;LAN 2 : Realtek 8111H
	音频 Audio	1 x Line-out, 1 x Mic-in, 1 x Line-in, optional
	USB	4 x USB3.0(5Gbps), 2 x USB2.0
	串口 Serial	2 x RS232/485
	内部接口 Internal I/O	COM
扩展接口 Expansion Slots	USB	4 x USB2.0 pin header, (2 x 2*5pin) (Default), 1 x vertical USB2.0 type-A connect (BOM Optional share signal with 1*USB2.0 header,optional type-A)
	eSPI	1 x eSPI header for debug
	FAN	1 x CPU FAN / 2 x SYS FAN
	GPIO	1 x 8bit GPIO
	FP	1 x FP(Power LED, HDD LED, Power button, Reset button)
	SMbus	1 x SMbus wafer
	PCIe X16	1 x PCIe X16(Gen3) slot
看门狗定时器 Watchdog Timer	输出&间隔 Output&Interval	System reset, programmable from 1~255 sec
	类型 Type	ATX Power Input:24-Pin ATX + 8/12-Pin ATX 12V
电源 Power	功耗 Power Consumption	TBD
	操作系统 O.S Support	MS Windows Linux
机械参数 Mechanism	尺寸 Dimensions	(L)305mm x(W) 244mm
	净重 Gross Weight	TBD
环境 Environment	工作温度 Operating	0°C ~ 60°C
	存储温度 Storage	-40°C ~ 85°C
	相对湿度 Humidity	5~95% (Non-condensing)

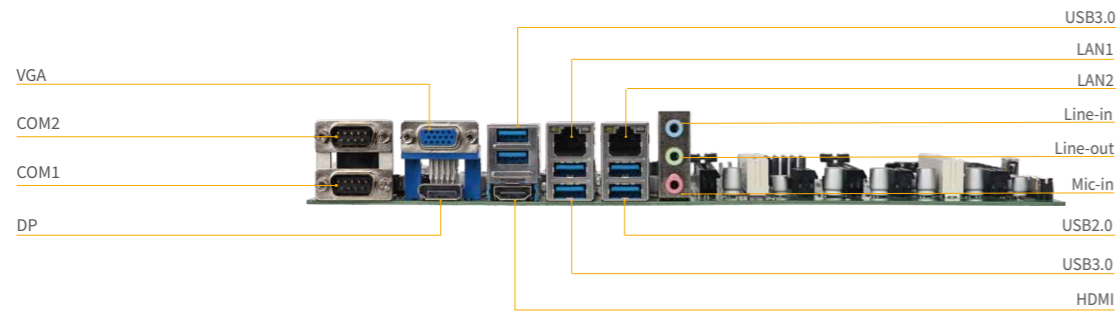
NK-7306

Intel® 12/13th Generation Celeron/Pentium/Core-I series LGA1700 processor,TDP 125W

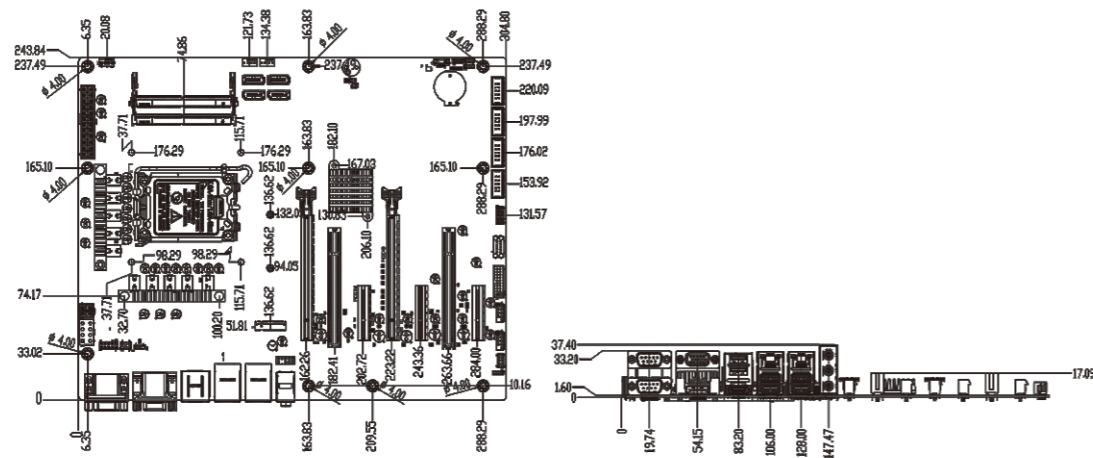
内部接口 Internal I/O



外部接口 Rear I/O



产品尺寸图(Unit:mm)



产品特点Feature

- Intel® 12/13th Generation Celeron/Pentium/Core-I series LGA1700 processor,TDP up to 125W
- Support dual channel(Non-ECC) DDR5-4800/5600MHz SO-DIMM slot, up to 64GB
- Support VGA,HDMI,DP Tri-display
- 1 x Giga-bit Ethernet,1 x 2.5 Giga-bit Ethernet
- 8 x USB3.0 ports, 5 x USB2.0 ports
- 1 x RS232/485, 5 x RS232
- 4 x SATA3.0 support software RAID 0,1,5,10,1xM.2-2242/2280 SATA/NVME Slot
- 2 x PCIe4.0 X 16 (1 x 16 or 2 x 8 link),3 X PCIe4.0 X4 (GEN4), 2 X PCI

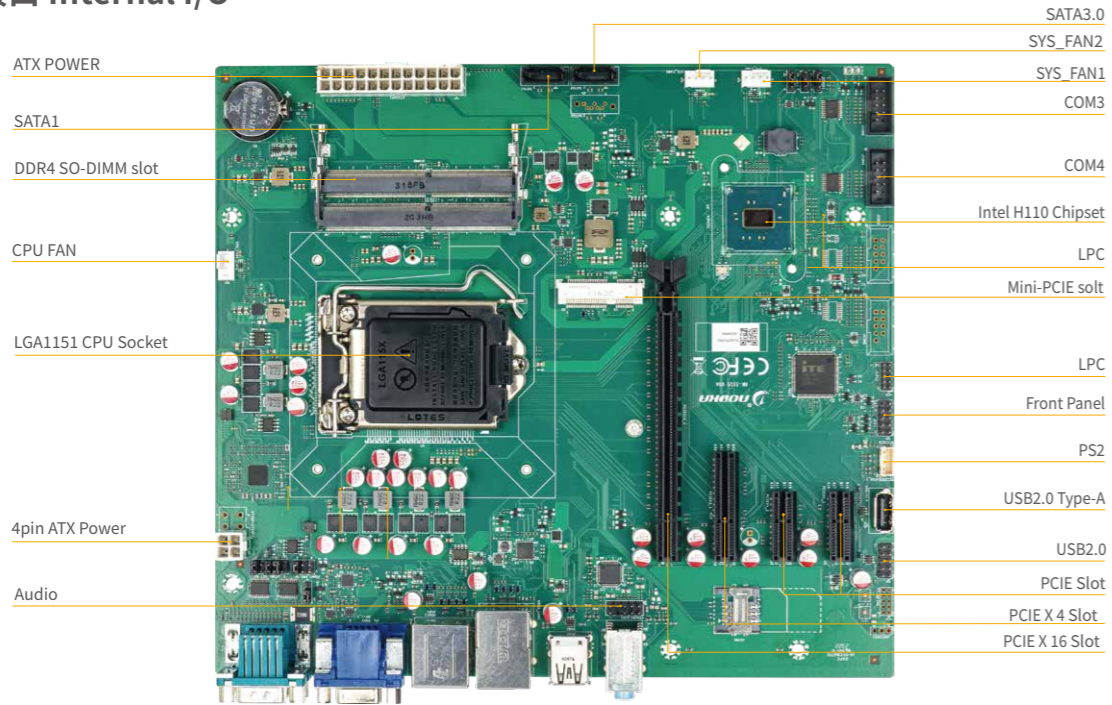
规格 Specification

产品型号		NK-7306
处理器 Processor System	CPU	Intel® 12/13th Generation Celeron/Pentium/Core-I series processor, TDP up to 125W
	插槽 Socket	LGA1700
	芯片组 Chipset	Intel Q670/Q670E
内存 Memory	BIOS	AMI 256Mb UEFI BIOS
	技术 Technology	Dual Channel(Non-ECC) DDR5-4800/5600MHz, up to 64GB
存储 Storage	插槽 Slot	2 x 262-pin SO-DIMM slots
	SATA	4 x SATA3.0 ports,Support software RAID 0,1,5,10
图形 Graphic	M.2	1 x M.2-2242/2280 M Key Slot (PCIe4.0 X 4 Signal)
	控制器 Controller	Intel HD graphics integrated
音频 Audio	编码器 Codec	Realtek ALC 897 codec
	显示 Display	1 x VGA, resolution up to 1920x1200@60Hz 1 x DP, resolution up to 4096x2160@60Hz 1 x HDMI, resolution up to 4096x2160@30Hz
外部接口 Rear I/O	网络 Ethernet	2 x GbE(RJ45)LAN1: Intel i219-V ;LAN 2: Intel i226-V
	音频 Audio	1 x Mic-in, 1 x Line-in, 1 x Line-out
	USB	6 x USB3.0(5Gbps)
	串口 Serial Port	1 x RS485/232,1 x RS232
内部接口 Internal I/O	Front Panel	1 x Front Panel(Power LED, HDD LED, Power button, Reset button)
	COM	4 x RS232 wafer
	USB	2xUSB3.0 pin header (1x2*5pin) , 4xUSB2.0 pin header (2x2*5pin) , 1xVertical USB2.0 type-A connector
	eSPI	1 x eSPI header for debug
	FAN	1 x CPU Fan wafer(1*4pin) 2 x SYS Fan wafer(1*4pin)
	GPIO	1 x 8bit GPIO
	SMbus	1 x SMbus wafer
	扩展接口 Expansion Slots	2 x PCIe X 16(Gen4) slots (1 x 16 or 2 x 8 link) 3 x PCIe X 4(Gen4) slots 2 x PCI slots
安全 Security	TPM	fTPM2.0
看门狗定时器 Watchdog Timer	输出&间隔 Output&Interval	System reset, programmable from 1~255 sec
电源 Power	类型 Type	ATX Power Input: 24-Pin ATX + 8/12-Pin ATX 12V
	功耗Consumption	TBD
操作系统 O.S Support	MS Windows	Windows10/11
	Linux	Linux
机械参数 Mechanism	尺寸 Dimensions	(L)305mm x(W) 244mm
	净重 Gross Weight	TBD
	工作温度 Operating	0°C ~ 60°C
环境 Environment	存储温度 Storage	-40°C ~ 85°C
	相对湿度 Humidity	5~95% (Non-condensing)

NK-5105

Intel® 6/7/8/9th Generation Celeron/Pentium/Core-I series processor,TDP 95W

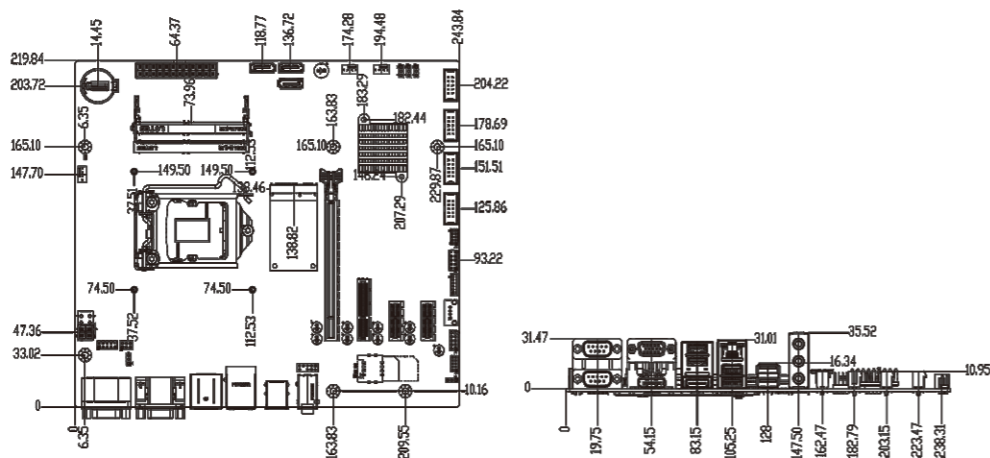
内部接口 Internal I/O



外部接口 Rear I/O



产品尺寸图(Unit:mm)



产品特点Feature

- Intel® 6/7/8/9th Generation Celeron/Pentium/Core-I series processor,TDP 95W
- Support dual channel(Non-ECC) DDR4-1866/2133/2400/2666MHz SO-DIMM slot, up to 64GB
- Support VGA,HDMI,DP Dual-display
- 1 x Giga-bit Ethernet
- 4 x USB3.0 ports, 4 x USB2.0 ports
- 1 x RS232/RS485, 5 x RS232
- 2 x SATA3.0, 1 x mSATA
- 1 x PCIe3.0 X 16,1xPCIEX4(x2link), 2xPCIEX1link

规格 Specification

产品型号		NK-5105
处理器 Processor System	CPU	Intel® 6/7/8/9th Generation Celeron/Pentium/Core-I series processor, TDP up to 95W
	插槽 Socket	LGA1151
	芯片组 Chipset	Intel H110
	BIOS	AMI 128Mb UEFI BIOS
内存 Memory	技术 Technology	Dual Channel(Non-ECC) DDR4-1866/2133/2400/2666MHz, up to 64GB
	插槽 Slot	2 x DDR4 260-pin SO-DIMM slots
存储 Storage	mSATA	1 x mSATA
	SATA	2 x SATA3.0 (up to 6Gb/s)
图形 Graphic	控制器 Controller	Intel HD graphics integrated
音频 Audio	编码器 Codec	Realtek ALC897 codec
外部接口 Rear I/O	显示 Display	1 x VGA, resolution up to 1920x1200@60Hz 1 x DP, resolution up to 4096x2304@60Hz 1 x HDMI 1.4, resolution up to 4096x2160@60Hz
	网络 Ethernet	1 x GbE Intel i219-V
	音频 Audio	1 x Line-out, 1 x Mic-in, 1 x Line-in
	USB	4 x USB3.0(5Gbps), 2 x USB2.0(480bps)
	串口 Serial Port	1 x RS232/485, 1 x RS232
内部接口 Internal I/O	COM	2 x RS232 wafer
	USB	2x USB2.0 header(BOM Optional share signal with 1*USB2.0 header,define type-A) 1 x Vertical USB2.0 type-A connect
	LPC	1 x LPC header
	PS/2	1 x PS/2 wafer
	Fan	1 x CPU Fan wafer(1*4pin),2 x SYS Fan wafer(1*4pin)
	SMBus	1 x SMBus wafer
	扩展接口 Expansion Slots	PCIe X 16 1 x PCIeX16(Gen3) slot PCIe X 4 1 x PCIeX4 (GEN2,x2link) PCIe 2 x PCIe (Gen2) slots Mini-PCIe 1 x mini-PCIe slot (SATA / USB Signal) with Nano-SIM card
安全 Security	TPM fTPM2.0	
看门狗定时器 Watchdog Timer	输出&间隔 Output&Interval System reset, programmable from 1~255 sec	
电源 Power	类型 Type	ATX Power Input: 24-Pin ATX + 4/8-Pin ATX 12V
	功耗Consumption	TBD
操作系统 O.S Support	MS Windows	Windows 7/8.1(Only support with Intel 6th Gen. CPU), Windows 10
	Linux	Linux
机械参数 Mechanism	尺寸 Dimensions	(L)244mm x(W) 220mm
	净重 Gross Weight	TBD
	工作温度 Operating	0°C ~ 60°C
环境 Environment	存储温度 Storage	-40°C ~ 85°C
	相对湿度 Humidity	5~95% (Non-condensing)

诺达佳研发中心

系统及应用开发 苏州

整机/载板/IO等应用及研发
专注系统应用及开发
累积丰富的行业及现场经验

软件研发中心 深圳

Android/Linux/应用开发



昆山 主板及ODM硬件研发

X86/ARM/国产化主板研发
ODM产品研发
紧跟X86/ARM前沿技术

80% | **10年+**
研发经验

硬核研发实力



扎根中国，逐步布局全球化

Based in China, Service all over the world

■ 苏州和安徽 2 个制造基地，苏州、昆山和深圳 3 地研发中心，全国 17 个销售办事处。

There are two manufacturing bases which are located in Suzhou and Anhui. Three R&D centers are located in Suzhou, Kunshan, Shenzhen respectively. 17 sales offices across China.

■ 在欧洲、北美、日韩、东南亚等区域的 19 个国家设立了销售服务渠道，并在荷兰建立了销售分公司和技术服务中心。

We have established sales and service channels in 19 countries in Europe, North America, Japan, South Korea, Southeast Asia, and other regions, as well as sales branches and technical service centers in the Netherlands.

■ 致力于打造全球化的研发与供应能力。

Committed to building global R&D and supply capabilities.



总部位于
中国苏州



2个
制造基地



3地
研发中心



17个
国内办事处



300+人
25% 研发



19个
国际销售服务渠道
覆盖超过30个国家